

Inverter Multi-Split Systems MXZ VA Series



Multiple Indoor Units can be Connected to a Single Outdoor

- Connect from 2 to 8 Indoor Units
- Large variety of Combination Patterns
- Energy Saving and Quiet Operation
- Six Multi-Split Systems from 6.4kW to 16.0kW (Heating)



Quietly Superior

Inverter Multi-Split System Range

Guaranteed Heating at **-15°C**



MXZ VA Series (2 to 5 Indoor Units):

- Many Indoor Unit Combinations to choose from
- Compact Size Outdoor Unit
- Up to 7.1kW Indoor Unit Connection
- **Guaranteed performance down to -15°C***
*On all MXZ~VA-A2/3 models & MXZ-5A100VA-A1.
- 5 Outdoor Units to choose from
- Quiet Operation

For Features and Specifications refer to
For Selection Table refer to
For Capacity Output Tables refer to

pages: 3 - 6
pages: 3 - 6
pages: 11 - 15



Model	MXZ-2 A52VA	MXZ-3 A54VA	MXZ-4 A71VA	MXZ-4 A80VA	MXZ-5 A100VA
Cool	5.2kW	5.4kW	7.1kW	8.0kW	10.0kW
Heat	6.4kW	6.8kW	8.6kW	9.4kW	12.0kW
Connect	2 indoor units	2 to 3 indoor units	2 to 4 indoor units	2 to 4 indoor units	2 to 5 indoor units
Total Capacity	7.0kW	10.0kW	12.5kW	14.5kW	17.1kW

MXZ-8A140VA Power Multi (2 to 8 Indoor Units):

- Many Combination Patterns to choose from
- Silent Mode for more quiet operation
- Single phase power supply
- 7.1kW Cassette for taller Ceilings
- **Guaranteed performance down to -15°C**
- 14.0kW (5HP) Inverter Multi-Split System
- High COP with advanced energy saving technology
- Connect up to 8 Indoor Units
- 7.1kW Ducted with Hi Static Pressure Fan

For Features and Specifications refer to
For Selection Procedure refer to

pages: 7 - 9
page: 8



Model	MXZ-8 A140VA
Cool	14.0kW
Heat	16.0kW
Connect	2 to 8 indoor units
Total Capacity	18.5kW

Controllers:

- PAR-21MAA 7 Day Timer
- G-50 Controller (With Web Server Functions!)
- MAC-821SC-E (Centralised ON/OFF Controller)

page: 2



Selection Guide

- Step 1:** Calculate the kilowatt (kW) Cooling required for each room individually.
- Step 2:** Select the Indoor Unit Type you would prefer.
(Wall Mounted, Wall Mounted Deluxe, Compact Floor, etc...)
- Step 3:** Check Indoor Selection Table.
- Step 4:** Check the Multi Outdoor Combination Table to select the correct Outdoor Unit for your installation.
This will ensure the Outdoor is capable of connecting to the Indoor Units selected.

Note: In some selections a larger amount of kilowatt (kW) Indoor Units can be selected to connect to a smaller kilowatt (kW) Outdoor.

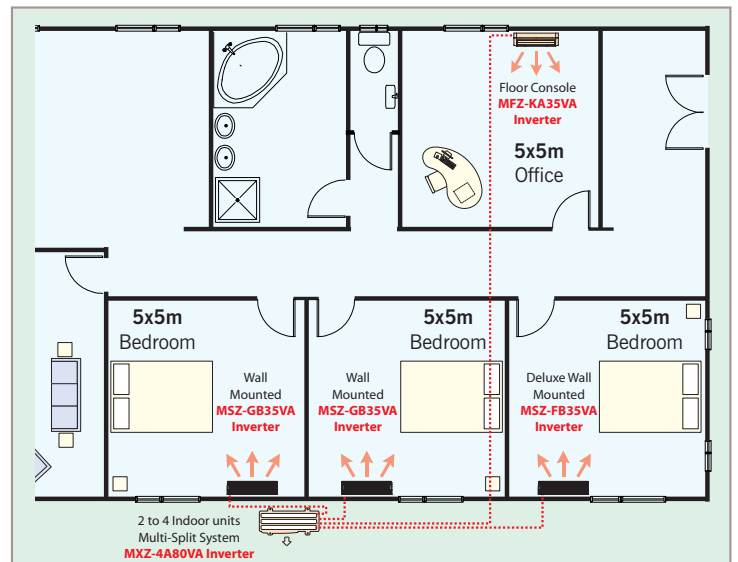
Reasons:

- Some areas are not used at same time as others. i.e. some rooms have reached room temperature so energy can be used in other areas.
- When only one or two Indoor Units are operated on a large Outdoor more output can be achieved.

Note: Please ensure the installation is suitable for selection.

Example: 3x Bedrooms and 1x Office

- Step 1:** Units selected as 3.5kW Cooling per Room.
- Step 2:** Wall Mounted Units are selected for the Bedrooms, while a Compact Floor Console is chosen for the Office.
- Step 3:** Check Indoor Selection Table.
Indoor Units selected were:
2x MSZ-GB35VA, 1x MSZ-FB35VA, 1x MFZ-KA35VA
3.5kW + 3.5kW + 3.5kW + 3.5kW = 14.0kW
- Step 4:** Outdoor Combination Table shows a MXZ-4A80VA can be used.
Note: If all 14kW are required at the same time a MXZ-8A140VA Power Multi should be used.



Optional Controllers

PAR-21MAA 7 Day Timer

Introducing the Mitsubishi Electric 7 Day Timer

Wake up or come home to optimal temperatures whilst conserving energy!

The PAR-21MAA controller allows your system to be programmed to maintain optimal temperature levels during the times when you are likely to be in the room. In the periods where you are unlikely to be there (such as during work hours or sleep time), the temperature can be set back to a minimum holding temperature instead of turning the system completely off.

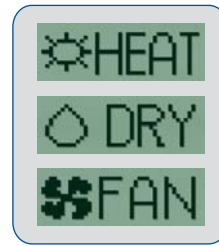
Turning a system on and off typically uses the most energy because the system has to heat a room starting from a very low temperature. By maintaining a minimum holding temperature Mitsubishi Electric inverter technology saves you energy as the temperature only needs to be raised by a couple of degrees.

Most air conditioning systems come with a 24 hour remote controller. This means that you can only set the system to automatically turn on and then off within a 24 hour period. This needs to be manually reactivated each time. The new Mitsubishi Electric 7 day timer allows you to program up to 8 separate Start/Stop patterns per day over a 7 day period.

For example:

- Between 10pm till 6am set temperature to 18°C
- Between 6am and 9am set temperature to 21°C
- Between 9am and 5.30pm set temperature to 18°C
- Between 5.30pm and 10pm set temperature to 21°C
- Between 10pm and 6am set temperature to 18°C

Note: PAR-21MAA comes standard with: SLZ-KA~VA and SEZ-KD~VA, and is an optional controller for: MSZ-GA/GB/FB~VA, MFZ-KA~VA inverter units. PAR-21MAA is NOT available on our fixed speed units.



The new clear and precise display is easy to understand for any user.



Industry First! Multi-language Display

Display can be switched over for 8 kinds of language.



Operation Control Function

Limiting the set temperature range

Air conditioning operation within a limited temperature range.

The setting of the upper and lower limit temperature is possible. This conserves energy by preventing excessive cooling and heating.

Auto off timer

Automatic turning off of air conditioning operation.

The air conditioning operation can be switched off automatically thus preventing waste operation. The set time can be changed from 30 minutes to 4 hours at 30-minute intervals.

Operation lock

This prevents random modification of settings.

- Two lock functions are available:
1. Lock all buttons.
 2. Lock all buttons other than ON/OFF button.

Note:
The PAR-21MAA and MAC-821SC-E both require the MAC-397IF-E adaptor.



MAC-821SC-E (Centralised ON/OFF Controller)

An optional Centralised ON/OFF Controller (MAC-821SC-E*) can also be incorporated to regulate all units connected in your home (and enabling ON/OFF selection and operation status confirmation from one single controller).



MAC-821SC-E

G-50 Controller (With Web Server Functions!)

Mitsubishi Electric can also offer you a control system to control your Air Conditioning from your local PC. The G-50 or GB-50 gives you simple computer control from your local Internet Explorer. The controller can have added features by installing software packages to suit your application. These packages include 365 Day Time Scheduling, Auto Alarming via Email when a fault occurs and Power Logging for multiple tenancy applications. The controller also has external inputs and outputs for Fresh Air Fan Start up and Fire Shutdown control. These additional features allow simple control of complex heating and cooling scenarios.



G-50



GB-50



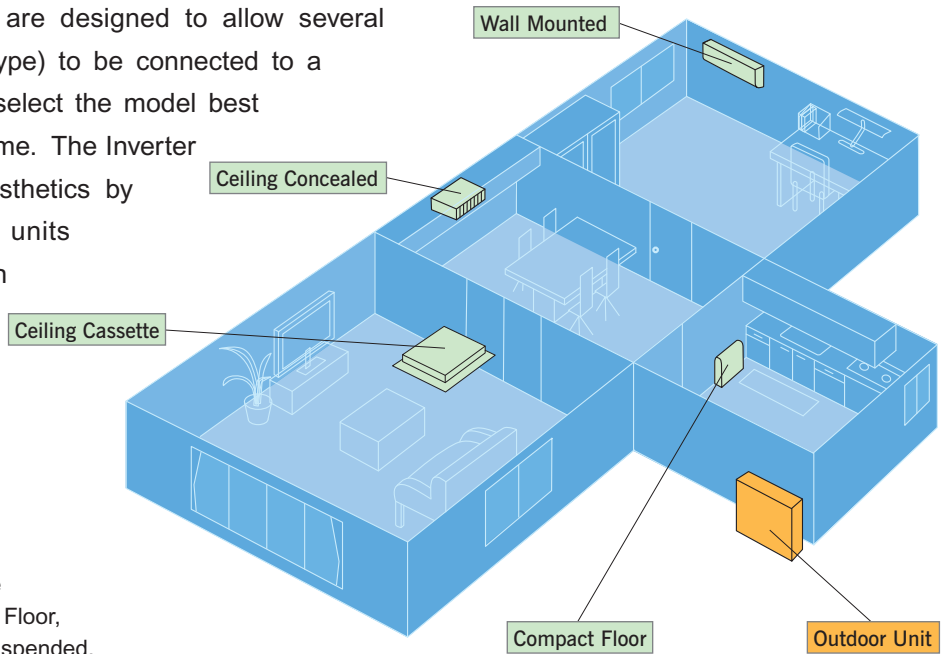
Web Screen Views

Inverter Multi-Split System MXZ VA Series

For Space Saving...

Multiple Indoor Units can be connected to a Single Outdoor Unit!

Our Inverter Multi-Split system models are designed to allow several indoor units (regardless of capacity or type) to be connected to a single outdoor unit. This allows you to select the model best suited to each and every room in your home. The Inverter Multi-Split system enhances exterior aesthetics by reducing the number of outdoor units necessary, while also providing you with an easy and economical way of adding indoor units at any time.



Select from a Wide Range of Stylish Indoor Units

Select the best-suited Indoor Unit for your application from many models. You can choose an Indoor Unit from; Wall Mounted, Compact Floor, Ceiling Concealed, Ceiling Cassette or Ceiling Suspended.

Wall Mounted	Compact Floor	Ceiling Concealed	Ceiling Cassette	Ceiling Suspended	Outdoor Units
 MSZ-FB25/35/50VA Deluxe  MSZ-GA22/25VA, GB35/50VA  MSZ-GA60/71VA	 MFZ-KA25/35/50VA	 SEZ-KD35/50/60/71VA  PEA-RP71EA	 SLZ-KA25/35/50VA(L)  PLA-RP60/71BA	 PCA-RP50/60/71GA	2-port  MXZ-2A52VA Connect 2 indoors 3-port / 4-port  MXZ-3A54VA Connect 2 to 3 indoors  MXZ-4A71VA Connect 2 to 4 indoors 4-port / 5-port  MXZ-4A80VA Connect 2 to 4 indoors  MXZ-5A100VA Connect 2 to 5 indoors

Compact Outdoor Unit Saves Space

MXZ VA series outdoor units can connect to 2, 3, 4 or 5 indoor units, optimising use of outdoor space and enhancing exterior aesthetics.



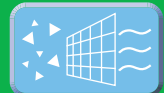
Indoor / Outdoor Selection Table

Indoor unit connection Min. / Max.	kW Class	Wall Mounted									Compact Floor			Ceiling Concealed				Ceiling Cassette					Ceiling Suspended			
		MSZ-FB			MSZ-GA/GB						MFZ-KA			SEZ-KD				PEA	SLZ-KA			PLA		PCA		
		25	35	50	22	25	35	50	60	71	25	35	50	35	50	60	71	71	25	35	50	60	71	50	60	71
2	MXZ-2A52VA	•	•		•	•	•			•	•		•					•	•							
2 to 3	MXZ-3A54VA	•	•	•	•	•	•	•		•	•	•	•	•	•			•	•	•				•		
2 to 4	MXZ-4A71VA	•	•	•	•	•	•	•	•	•	•	•	•	•	•	•		•	•	•	•	•	•	•	•	•
2 to 4	MXZ-4A80VA	•	•	•	•	•	•	•	•	•	•	•	•	•	•	•	•	•	•	•	•	•	•	•	•	•
2 to 5	MXZ-5A100VA	•	•	•	•	•	•	•	•	•	•	•	•	•	•	•	•	•	•	•	•	•	•	•	•	•

Guaranteed

Air Purification

Heating at
-15°C



Connect between 2 to 5 Indoor Units to a single Outdoor Unit

Energy Saving with High COP

Mitsubishi Electric Inverter Technology provides superior energy efficiency with a COP: 4.56 (MXZ-4A80VA in Heating).

COP
4.56

Quiet Operation (Silent Mode)*

When operating the MXZ outdoor unit in silent mode* the (outdoor) sound level is just 44dB(A) (MXZ-3A54 and 4A80 in cooling). In combination with the MSZ-FB25VA, indoor noise can also be reduced to a quiet 20dB(A) and the MSZ-FB35VA, MSZ-GA22/25VA to a quiet 21dB(A).

*Silent mode needs to be set when installed.

Indoor Only
20
dB(A)

Outdoor Only
44
dB(A)

7 Day Timer (Optional for Indoor Units)

The optional wired wall controller PAR-21MAA* with Weekly Timer function enables 8 separate Start/Stop pattern settings over a single day. Use the optional Centralised On/Off Controller (MAC-821SC-E*) to provide On/Off selection and see operation status of all Indoor Units.

*Requires optional interface (MAC-397IF-E), for more information please see page 2.



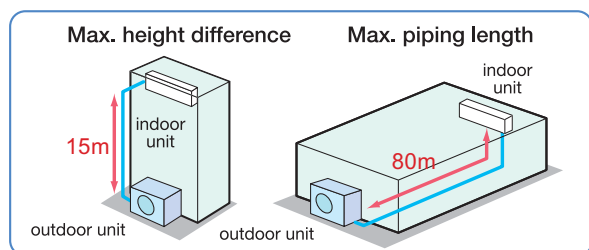
Fix Operation Mode

It is possible to set a "Fix operation mode" to lock operation to 'Heating' or 'Cooling' mode. This is convenient in places such as rental properties or hotels.

Longer Piping Length

Piping is extendable up to 80* metres total in length with 25 metres per unit and 15 metres of this in height (additional refrigerant charge may be required).

*MXZ-5A100VA



Guaranteed Heating Performance Down to Minus 15 Degrees Celsius*.

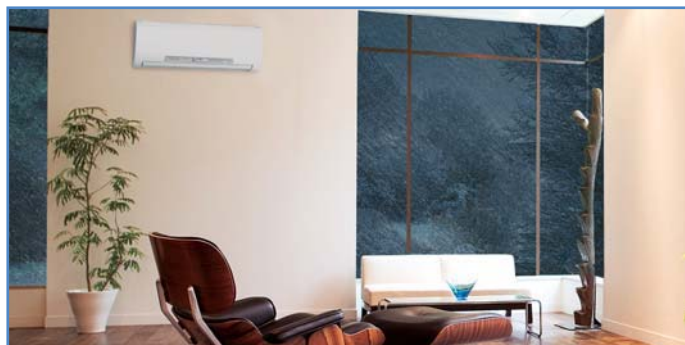
Not all heat pumps perform when they are needed most. Our range is guaranteed to effectively provide heating on those cold nights or mornings when you really need it.

*On all MXZ-VA-A2/3 models & MXZ-5A100VA-A1

Compact Floor



Wall Mounted



Ceiling Concealed



Ceiling Suspended



Ceiling Cassette



Inverter Multi-Split System

MXZ VA Series

Connectable Indoor Unit Specifications for MXZ VA Series

ALL
R410A

MSZ-GA/GB Series Wall Mounted

Model Name			MSZ-GA22VA-A2	MSZ-GA25VA-A2	MSZ-GB35VA	MSZ-GB50VA	MSZ-GA60VA	MSZ-GA71VA	
kW Class			22	25	35	50	60	71	
Rated Capacity Cooling (Heating)			2.2 (3.3)	2.5 (3.2)	3.5 (4.0)	5.0 (5.6)	6.0 (6.8)	7.1 (8.1)	
Pipe Size (Liquid / Gas)			6.35 / 9.52	6.35 / 9.52	6.35 / 9.52	6.35 / 12.7	6.35 / 15.88	9.52 / 15.88	
Air Flow	Cooling	[Hi/SHi]	150 (SHi*)	167 (SHi*)	167 (SHi*)	182 (SHi*)	287	287	
	Heating			135 (SHi*)	175 (SHi*)				
Sound Level			[Low-Hi/SHi] dB (A)	21 - 43	21 - 43	22 - 43	32 - 48 (30-48 Heat)	32 - 54	33 - 54
Dimensions	W	mm	780	780	780	780	1,100	1,100	
	D	mm	210	210	210	210	258	258	
	H	mm	298	298	298	298	325	325	
Weight			kg	9	9	9	16	16	

*SHi = Super High

MSZ-FB Series Deluxe Wall Mounted

MFZ-KA Series Compact Floor

Model Name			MSZ-FB25VA	MSZ-FB35VA	MSZ-FB50VA	MFZ-KA25VA	MFZ-KA35VA	MFZ-KA50VA	
kW Class			25	35	50	25	35	50	
Rated Capacity Cooling (Heating)			2.5 (3.2)	3.5 (4.0)	5.0 (6.0)	2.5 (3.4)	3.5 (4.0)	4.8 (6.0)	
Pipe Size (Liquid / Gas)			6.35 / 9.52	6.35 / 9.52	6.35 / 12.7	6.35 / 9.52	6.35 / 9.52	6.35 / 12.7	
Air Flow	Cooling	[Hi/SHi]	187 (SHi*)	187 (SHi*)	247 (SHi*)	145 (SHi*)	152 (SHi*)	178 (SHi*)	
	Heating			202 (SHi*)	247 (SHi*)				
Sound Level			[Low-Hi/SHi] dB (A)	20 - 42 (20-43 Heat)	20 - 43 (21-44 Heat)	29 - 52 (27-50 Heat)	22 - 37	23 - 38 (25-38 Heat)	32 - 43 (32-44 Heat)
Dimensions	W	mm	798	798	798	700	700	700	
	D	mm	257	257	257	200	200	200	
	H	mm	295	295	295	600	600	600	
Weight			kg	12	12	12	14	14	

*SHi = Super High

SLZ-KA Series Compact Ceiling Cassette

PLA-RP Series

Model Name			SLZ-KA25VA(L)*	SLZ-KA35VA(L)*	SLZ-KA50VA(L)*	PLA-RP60BA*	PLA-RP71BA*
kW Class			25	35	50	60	71
Rated Capacity Cooling (Heating)			2.5 (3.0)	3.5 (4.0)	4.6 (5.0)	5.7 (6.9)	7.1 (8.0)
Pipe Size (Liquid / Gas)			6.35 / 9.52	6.35 / 9.52	6.35 / 12.7	6.35 / 15.88	9.52 / 15.88
Air Flow	[Hi]	L/s	167	183	183	300	350
	[Low-Hi]	dB (A)	28 - 37	29 - 38	30 - 39	28 - 32	28 - 34
Dimensions	W	mm	570	570	570	840	840
	D	mm	235	235	235	840	840
	H	mm	570	570	570	258	258
Panel	W x D x H	mm	650 x 650 x 20	650 x 650 x 20	650 x 650 x 20	950 x 950 x 35	950 x 950 x 35
	Unit (Panel)	kg	16.5 (3)	16.5 (3)	16.5 (3)	23 (6)	23 (6)

*SLZ-KA**VAL: Includes Wireless Remote Controller.
SLZ-KA**VA: Includes PAR-21MAA - 7 Day Wall Timer.

*PLA-RP**BA: Includes PAR-21MAA - 7 Day Wall Timer, (Optional) Wireless Remote Controller.

SEZ-KD Series Ceiling Concealed

PEA-RP Series

Model Name			SEZ-KD35VA*	SEZ-KD50VA*	SEZ-KD60VA*	SEZ-KD71VA*	PEA-RP71EA*
kW Class			35	50	60	71	71
Rated Capacity Cooling (Heating)			3.5 (4.0)	5.0 (6.0)	5.5 (7.0)	7.1 (8.1)	7.1 (8.4)
Pipe Size (Liquid / Gas)			6.35 / 9.52	6.35 / 12.7	6.35 / 15.88	9.52 / 15.88	9.52 / 15.88
Air Flow	[Hi]	L/s	184	250	300	333	450
	[Low-Mid-Hi]	dB (A)	23 - 28 - 33	30 - 34 - 37	30 - 34 - 38	30 - 35 - 40	52 - 55
External Static Pressure			Pa	5 - 15 - 35 - 50	5 - 15 - 35 - 50	5 - 15 - 35 - 50	125
Dimensions	W	mm	990	990	1,190	1,190	785
	D	mm	700	700	700	700	690
	H	mm	200	200	200	200	428
Weight			kg	21	23	27	46

*SEZ-KD **VA : Includes PAR-21MAA - 7 Day Wall Timer.

*PEA-RP**EA: Includes PAR-21MAA - 7 Day Wall Timer.

PCA-RP Series Ceiling Suspended

Model Name			PCA-RP50GA-A2*	PCA-RP60GA*	PCA-RP71GA*
kW Class			50	60	71
Rated Capacity Cooling (Heating)			5.0 (6.0)	5.5 (6.9)	7.1 (8.0)
Pipe Size (Liquid / Gas)			6.35 / 12.7	6.35 / 15.88	9.52 / 15.88
Air Flow	[Hi]	L/s	217	300	300
	[Low-Hi]	dB (A)	37 - 42	37 - 43	37 - 43
Dimensions	W	mm	1000	1310	1310
	D	mm	680	680	680
	H	mm	210	210	210
Weight			kg	27	34

*PCA-RP**GA: Includes PAR-21MAA - 7 Day Wall Timer.

Inverter Multi-Split System

MXZ VA Series

Connectable Indoor Units

Class (kW)	Equivalent models
22 (2.2)	MSZ-GA22VA
25 (2.5)	MSZ-FB25VA, MSZ-GA25VA, MFZ-KA25VA, SLZ-KA25VA(L)
35 (3.5)	MSZ-FB35VA, MSZ-GB35VA, MFZ-KA35VA, SEZ-KD35VA, SLZ-KA35VA(L)
50 (5.0)	MSZ-FB50VA, MSZ-GB50VA, MFZ-KA50VA, SEZ-KD50VA, SLZ-KA50VA(L), PCA-RP50GA
60 (6.0)	MSZ-GA60VA, SEZ-KD60VA, PLA-RP60BA, PCA-RP60GA
71 (7.1)	MSZ-GA71VA, SEZ-KD71VA, PEA-RP71AA, PLA-RP71BA, PCA-RP71GA

Outdoor Units

MXZ-2A52VA	Connect 2 indoors
MXZ-3A54VA	Connect 2 to 3 indoors
MXZ-4A71VA	Connect 2 to 4 indoors
MXZ-4A80VA	Connect 2 to 4 indoors
MXZ-5A100VA	Connect 2 to 5 indoors

Indoor / Outdoor Selection Table (Connectable indoor unit combinations)

MXZ-2A52VA	MXZ-4A71VA	MXZ-4A71VA	MXZ-4A80VA	MXZ-4A80VA	MXZ-4A80VA	MXZ-5A100VA	MXZ-5A100VA	MXZ-5A100VA	MXZ-5A100VA	MXZ-5A100VA	MXZ-5A100VA
22+22	22+22	25+25+50	22+22	22+25+71	22+22+22+71	22+22	22+25+60	35+50+60	22+25+35+35	35+35+35+60	22+25+25+35+50
22+25	22+25	25+25+60	22+25	22+35+35	22+22+25+25	22+25	22+25+71	35+50+71	22+25+35+50	22+22+22+22+22	22+25+25+35+60
22+35	22+35	25+35+35	22+35	22+35+60	22+22+25+35	22+35	22+35+35	35+60+60	22+25+35+60	22+22+22+25	22+25+35+35+35
25+25	22+50	25+35+50	22+50	22+35+60	22+22+25+50	22+50	22+35+50	35+60+71	22+25+35+71	22+22+22+25+35	25+25+25+25+25
25+35	22+60	25+35+60	22+60	22+35+71	22+22+25+60	22+60	22+35+60	50+50+50	22+25+50+50	22+22+22+25+50	25+25+25+25+35
35+35	25+25	25+50+50	22+71	22+50+50	22+22+25+71	22+71	22+35+71	50+50+60	22+25+50+60	22+22+22+25+60	25+25+25+25+50
	25+35	35+35+35	25+25	22+50+60	22+22+35+35	25+25	22+50+50	50+50+71	22+25+50+71	22+22+22+271	25+25+25+25+60
	25+50	35+35+50	25+35	22+50+71	22+22+35+50	25+35	22+50+60	22+22+22+22	22+35+35+35	22+22+22+25	25+25+25+25+71
	22+22	25+60	22+22+22+22	25+50	25+25+25	22+22+35+60	25+50	22+50+71	22+22+22+25	22+22+22+25+35	25+25+25+35+35
	22+25	35+35	22+22+22+25	25+60	25+25+35	22+22+50+50	25+60	22+60+60	22+22+22+35	22+22+22+35+60	25+25+35+35+35
	22+35	35+50	22+22+22+35	25+71	25+25+50	22+25+25+25	25+71	22+60+71	22+22+22+60	22+22+22+50	25+25+35+35+50
	22+50	35+60	22+22+22+50	35+35	25+25+60	22+25+25+35	35+35	25+25+25	22+22+22+60	22+35+50+50	22+22+22+50+71
	25+25	50+50	22+22+25+25	35+50	25+25+71	22+25+25+50	35+50	25+25+35	22+22+271	25+25+25+25	22+22+22+35+35
	25+35	50+60	22+22+25+35	35+60	25+35+35	22+25+25+60	35+60	25+25+50	22+22+25+25	25+25+25+35	22+22+22+35+50
	25+50	60+60	22+22+25+50	35+71	25+35+50	22+25+35+35	35+71	25+25+60	22+22+25+35	25+25+25+50	22+22+22+35+60
	35+35	22+22+22	22+22+35+35	50+50	25+35+60	22+25+35+50	50+50	25+25+71	22+22+25+50	25+25+25+60	22+22+22+35+71
	35+50	22+22+25	22+25+25+25	50+60	25+35+71	22+25+35+60	50+60	25+35+35	22+22+25+60	25+25+25+71	22+22+25+25+25
	50+50	22+22+35	22+25+25+35	50+71	25+50+50	22+35+35+35	50+71	25+35+50	22+22+25+71	25+25+35+35	22+22+25+25+35
	22+22+22	22+22+50	22+25+25+50	60+60	25+50+60	22+35+35+50	60+60	25+35+60	22+22+35+35	25+25+35+50	22+22+25+25+50
	22+22+25	22+22+60	22+25+35+35	60+71	35+35+80	25+25+25+25	60+71	25+35+71	22+22+35+50	25+25+35+60	22+22+25+25+60
	22+22+35	22+25+25	25+25+25+25	22+22+22	35+35+80	25+25+25+35	71+71	25+50+50	22+22+35+60	25+25+35+71	22+22+25+25+71
	22+22+50	22+25+35	25+25+25+35	22+22+25	35+35+60	25+25+25+50	22+22+22	25+60+60	22+22+35+71	25+25+50+50	22+22+25+35+35
	22+25+25	22+25+50	25+25+50	22+22+35	35+35+71	25+25+25+60	22+22+25	25+60+71	22+22+50+50	25+25+50+60	22+22+25+35+50
	22+25+35	22+25+60	25+25+35+35	22+22+50	35+50+50	25+25+35+35	22+22+35	25+60+60	22+22+50+60	25+25+50+71	22+22+35+35+35
	22+25+50	22+35+35	22+22+35+35	22+22+60	35+50+60	25+25+35+50	22+22+50	25+60+71	22+22+50+71	25+35+35+35	22+25+25+25+25
	22+35+35	22+35+50	22+22+71	22+22+22+22	25+35+35+35	22+22+60	22+22+60	35+35+35	22+25+25+25	25+35+35+50	22+25+25+25+35
	25+25+25	22+35+60	22+25+25	22+22+25	22+22+22+25	22+22+71	22+22+71	35+35+50	22+25+25+35	25+35+35+60	22+25+25+25+50
	25+25+35	22+50+50	22+25+35	22+25+35	22+22+22+35	22+25+25	22+25+25	35+35+60	22+25+25+50	25+35+35+71	22+25+25+25+60
	25+25+50	25+25+25	22+25+50	22+25+50	22+22+22+50	22+25+35	22+25+35	35+35+71	22+25+25+60	35+35+35+35	22+25+25+25+71
	25+35+35	25+25+35	25+25+35+35	22+25+60	22+22+22+60	22+25+50	22+25+50	35+50+50	22+25+25+71	35+35+35+50	22+25+25+35+35

Note: There are no other combinations other than these tables. See pages: 11-14 for full table.

Outdoor Unit Specifications

MXZ VA Series Inverter Multi-Split Outdoor Units (R410A)

TYPE		Inverter Multi-Split System Outdoor Units				
MODEL NAME		MXZ-2A52VA (-A2)	MXZ-3A54VA (-A2/3)	MXZ-4A71VA (-A2/3)	MXZ-4A80VA (-A2)	MXZ-5A100VA
INDOOR COMBINATION		2 Indoor Units	2 to 3 Indoor Units	2 to 4 Indoor Units	2 to 4 Indoor Units	2 to 5 Indoor Units
COOL	Capacity [kW]	5.2	5.4	7.1	8.0	10.0
	Min-Max [kW]	1.1 - 6.0	2.9 - 6.8	3.7 - 8.8	3.7 - 9.2	3.7 - 11.0
	Input [kW]	1.50	1.29	1.93	2.19	2.93
	COP (In + out)	3.31	3.87	3.44	3.45	3.23
	Sound Level (Silent/High) [dB(A)]	45 - 49	43 - 46	45 - 48	44 - 46	46 - 51
	Rated Current (Out) [A]	6.75	5.69	8.48	9.62	12.88
	Max Current [A]	10.2	16.4	16.4	17.4	20.0
Air Volume (High) [L/s]	548	702	702	702	943	
HEAT	Capacity [kW]	6.4	6.8	8.6	9.4	12.0
	Min-Max [kW]	1.0 - 7.2	2.6 - 9.0	3.4 - 9.0	3.4 - 11.6	3.4 - 14.0
	Input [kW]	1.71	1.46	1.95	1.93	2.84
	COP (In + out)	3.61	4.38	4.13	4.56	4.00
	Sound Level (Silent/High) [dB(A)]	48 - 50	44 - 48	46 - 50	45 - 48	47 - 54
	Rated Current (Out) [A]	7.64	6.39	8.56	8.48	12.45
	Max Current [A]	10.2	16.4	16.4	17.4	20.0
Air Volume (High) [L/s]	555	687	775	730	988	
Max. Total Capacity of all indoor units [kW]		7.0	10.0	12.5	14.5	17.1
Power Supply [V,Phase,Hz]		230, Single, 50, Outdoor Power Supply				
OUTDOOR	Dimension (WxDxH) [mm]	800 x 285 x 550	840 x 330 x 710	840 x 330 x 710	900 x 320 x 900	900 x 320 x 900
	Weight [kg]	40	57	58	67	68
EXT. PIPE	Liquid (diameter) [mm]	6.35 x 2	6.35 x 3	6.35 x 4	6.35 x 4	6.35 x 5
	Gas (diameter) [mm]	9.52 x 2	9.52 x 3	9.52 x 3 + 12.7 x 1	9.52 x 3 + 12.7 x 1	9.52 x 4 + 12.7 x 1
	Max. Length† (Total/Each) [m]	30 - 20	50 - 25	60 - 25	70 - 25	80 - 25
	Max. Height [m]	15 (10*)	15 (10*)	15 (10*)	15 (10*)	15 (10*)
OPERATION RANGE	Cooling [°C]	-10 / +43	-10 / +43	-10 / +43	-10 / +43	-10 / +43
	Heating [°C]	-15 / +24	-15 / +24	-15 / +24	-15 / +24	-15 / +24

Note: Running Current and Power Input figures are for outdoor unit only.

Rating Conditions Cooling — Indoor: 27°C DB, 19°C WB Outdoor: 35°C (AS / NZS 3823) Heating — Indoor: 20°C DB Outdoor: 7°C DB, 6°C WB

† Maximum length is inclusive of height differential. i.e. (30 max. length / 15 max. height) means that 2x pipes can be 10m high and 5m across each for a total length of 30m.

* If the outdoor unit is installed higher than the indoor unit, max. height is reduced to 10m.

Inverter Multi-Split System MXZ-8A140VA

Guaranteed
Heating at
-15°C



The New Power Multi Provides a Quiet, Highly Efficient and Flexible Air Conditioning System for All Your Air Conditioning Needs

The MXZ-8A140VA Power Multi is a new addition to Mitsubishi Electric's popular Inverter Multi series Air Conditioning systems. The Power Multi has been specifically designed for homes or small offices, and with a long list of features, to give you the best comfort level for any room.



For Offices

Suggestion for indoor unit selection

The SLZ-KA Cassette units are 570 x 570 to install into half ceiling tiles.

For larger areas the PLA-RP Cassette is installed.

Cassette units have 4 outlets that can be adjusted to give better room comfort

For Homes

Suggestion for indoor unit selection

For a large living room, the SEZ-KD Ceiling Concealed or the MFZ-KA Compact Floor Standing type easily match your interior.

For a bed room, the Wall Mounted type creates a quiet atmosphere for sleeping.



High Efficiency

The latest technology obtained through the development of our well-reputed Power Inverter series offers the higher EER of 3.52 in Cooling* and COP of 3.91 in Heating*.

*When connected with 3x MSZ-GA60VA indoor units.

Flexible Choice of Indoor Unit

You can choose an indoor unit optimum for the application, interior and size of your room from the versatile product line from many models.

7 Day Timer (Optional for Indoor Units)

The optional wired wall controller PAR-21MAA* with Weekly Timer function enables 8 separate Start/Stop pattern settings over a single day.

*Requires optional interface (MAC-3971F-E), for more information please see page 2.

Silent Operation

The Power Multi runs so smooth and quiet, you get comfort with very little noise. Under low operating load, the "Low-Noise" mode can be selected thus providing more silent operation. Connecting with our latest wall mounted indoor units creates a silent and comfortable living environment.

Guaranteed Heating Performance Down to Minus 15 Degrees Celsius

Easy Installation

We have worked hard to make the Power Multi as easy to install and maintain as possible. The branch box simplifies the piping work, providing only one pair of pipes to be installed from the outdoor unit inside to the branch box.

Guaranteed
Heating at
-15°C



Easy Installation with 2 to 8 Connectable Indoor Units

New to the Range of Multi Systems

Large Ducted and Cassette Indoor units with a cooling capacity of 7.1kW Cooling.

The PEA-RP71EA Ducted Indoor has the ability to cover a larger area with a Hi Static Pressure Fan for the installation of more ductwork to provide a more comfortable working environment.

The PLA-RP60/71BA Cassette Indoor can be installed in a Larger area with a ceiling height of up to 4.2 Metres.

Both of these series come complete with the 7 Day Timer Wall Controller.



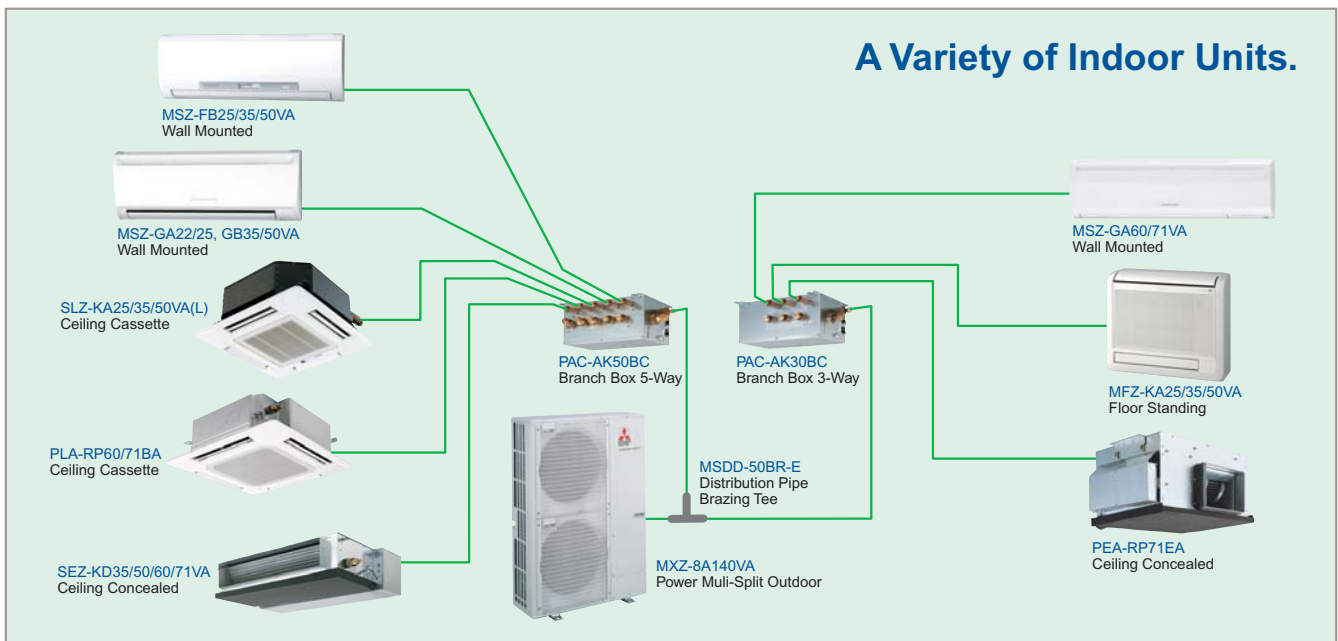
High Static Pressure (125Pa)
PEA-RP71EA

- Hot Start



PLA-RP60/71BA

- Hot Start
- High Ceiling Mode
- Fresh Air Intake
- Additional Air Outlet Duct
- Optional: Elevating Grille
- Optional: 360° i-see Temperature Sensor



MXZ-8A140VA Inverter Power Multi-Split

- 14.0kW (5HP) Inverter Multi-Split System
- High COP with advanced energy saving technology
- Silent Mode for quieter operation
- R410A refrigerant
- Single phase power supply

R410A

DC
Inverter

Cleaning-free,
pipe reuse



Procedures for Selection

Basic Conditions:

- Number of indoor units
2 to 8 units
 - Total indoor unit capacity
4.4 to 18.5 kW
 - Number of branch box
1 to 2 units
- | | | |
|---|---------------------------|--------------------------------------|
| 4 | Number of branch box used | Number of distribution pipe required |
| | 1 branch box | Not required |
| | 2 branch boxes | 1 distribution pipe required |

Indoor Unit Selection Table:

Type of the indoor unit	Series name	Capacity Class					
		2.2kW	2.5kW	3.5kW	5.0kW	6.0kW	7.1kW
Wall Mounted	MSZ-FB : Deluxe		●	●	●	●	●
	MSZ-GA/GB : Standard	●	●	●	●	●	●
Ceiling Concealed	SEZ-KD : Compact			●	●	●	●
	PEA-RP : High Static (125Pa)						●
Ceiling Cassette	SLZ-KA : Compact		●	●	●		
	PLA-RP : Power Cassette					●	●
Floor Standing	MFZ-KA : Compact		●	●	●		

System Capacity Calculation:

Method for obtaining system capacity

To obtain the system capacity, first add up the ratings of all the indoor units connected and then find the standard capacity with the help of the figures below. The unit's quantities are limited in 2 to 8 units. Make sure that the total rated capacity selected will stay in a range of 4.4 ~ 18.5kW.

SLZ-KA35VA = 3.5 kW	} Total rated capacity 18.5 ≤ 18.5kW
SLZ-KA50VA = 5.0 kW	
MSZ-GA25VA x 4 = 2.5 x 4 = 10.0 kW	

Inverter Multi-Split System

MXZ-8A140VA

Connectable Indoor Unit Specifications for MXZ-8A140VA

ALL
R410A

MSZ-GA/GB Series Wall Mounted

Model Name		MSZ-GA22VA	MSZ-GA25VA	MSZ-GB35VA	MSZ-GB50VA	MSZ-GA60VA	MSZ-GA71VA
kW Class		22	25	35	50	60	71
Rated Capacity Cooling (Heating)		2.2 (3.3)	2.5 (3.2)	3.5 (4.0)	5.0 (5.6)	6.0 (6.8)	7.1 (8.1)
Pipe Size (Liquid / Gas)		6.35 / 9.52	6.35 / 9.52	6.35 / 9.52	6.35 / 12.7	6.35 / 15.88	9.52 / 15.88
Air Flow	Cooling	150 (SHi*)	150 (SHi*)	167 (SHi*)	182 (SHi*)	287	287
	Heating			172 (SHi*)			
Sound Level		[Low-Hi/SHi] dB (A)	21 - 43	21 - 43	22 - 43	32 - 48 (30-48 Heat)	32 - 54
Dimensions	W	mm	780	780	780	780	1,100
	D	mm	210	210	210	210	258
	H	mm	298	298	298	298	325
Weight		kg	9	9	9	9	16

*SHi = Super High

MSZ-FB Series Deluxe Wall Mounted

MFZ-KA Series Compact Floor

Model Name		MSZ-FB25VA	MSZ-FB35VA	MSZ-FB50VA	MFZ-KA25VA	MFZ-KA35VA	MFZ-KA50VA	
kW Class		25	35	50	25	35	50	
Rated Capacity Cooling (Heating)		2.5 (3.2)	3.5 (4.0)	5.0 (6.0)	2.5 (3.4)	3.5 (4.0)	4.8 (6.0)	
Pipe Size (Liquid / Gas)		6.35 / 9.52	6.35 / 9.52	6.35 / 12.7	6.35 / 9.52	6.35 / 9.52	6.35 / 12.7	
Air Flow	Cooling	187 (SHi*)	187 (SHi*)	247 (SHi*)	145 (SHi*)	152 (SHi*)	178 (SHi*)	
	Heating							202 (SHi*)
Sound Level		[Low-Hi/SHi] dB (A)	20 - 42 (20-43 Heat)	20 - 43 (21-44 Heat)	29 - 52 (27-50 Heat)	22 - 37	23 - 38 (25-38 Heat)	32 - 43 (32-44 Heat)
Dimensions	D	mm	798	798	798	700	700	
	H	mm	257	257	257	200	200	
		mm	295	295	295	600	600	
Weight		kg	12	12	12	14	14	

*SHi = Super High

SLZ-KA Series Compact Ceiling Cassette

PLA-RP Series

Model Name		SLZ-KA25VA(L)*	SLZ-KA35VA(L)*	SLZ-KA50VA(L)*	PLA-RP60BA*	PLA-RP71BA*		
kW Class		25	35	50	60	71		
Rated Capacity Cooling (Heating)		2.5 (3.0)	3.5 (4.0)	4.6 (5.0)	5.7 (6.9)	7.1 (8.0)		
Pipe Size (Liquid / Gas)		6.35 / 9.52	6.35 / 9.52	6.35 / 12.7	6.35 / 15.88	9.52 / 15.88		
Air Flow	[Hi]	L/s	167	183	300	350		
Sound Level		[Low-Hi]	dB (A)	28 - 37	29 - 38	30 - 39	28 - 32	28 - 34
Dimensions	W	mm	570	570	570	840	840	
	D	mm	235	235	235	840	840	
	H	mm	570	570	570	258	258	
Panel	W x D x H	mm	650 x 650 x 20	650 x 650 x 20	650 x 650 x 20	950 x 950 x 35	950 x 950 x 35	
	Unit (Panel)	kg	16.5 (3)	16.5 (3)	16.5 (3)	23 (6)	23 (6)	

*SLZ-KA**VAL: Includes Wireless Remote Controller.
SLZ-KA**VA: Includes PAR-21MAA - 7 Day Wall Timer.

*PLA-RP**BA: Includes PAR-21MAA - 7 Day Wall Timer, (Optional) Wireless Remote Controller.

SEZ-KD Series Ceiling Concealed

PEA-RP Series

Model Name		SEZ-KD35VA*	SEZ-KD50VA*	SEZ-KD60VA*	SEZ-KD71VA*	PEA-RP71EA*	
kW Class		35	50	60	71	71	
Rated Capacity Cooling (Heating)		3.5 (4.0)	5.0 (6.0)	5.5 (7.0)	7.1 (8.1)	7.1 (8.4)	
Pipe Size (Liquid / Gas)		6.35 / 9.52	6.35 / 12.7	6.35 / 15.88	9.52 / 15.88	9.52 / 15.88	
Air Flow	[Hi]	L/s	184	250	300	333	
External Static Pressure		Pa	5 - 15 - 35 - 50	5 - 15 - 35 - 50	5 - 15 - 35 - 50	5 - 15 - 35 - 50	
Sound Level		[Low-Mid-Hi]	dB (A)	23 - 28 - 33	30 - 34 - 37	30 - 34 - 38	30 - 35 - 40
Dimensions	W	mm	990	990	1,190	1,190	
	D	mm	700	700	700	700	
	H	mm	200	200	200	200	
Weight		kg	21	23	27	27	

*SEZ-KD **VA : Includes PAR-21MAA - 7 Day Wall Timer.

*PEA-RP**EA: Includes PAR-21MAA - 7 Day Wall Timer.

PAC-AK**BC Branch Boxes

Model Name		PAC-AK50BC	PAC-AK30BC
Connectable Number of Indoor Units		Max. 5	Max. 3
Power Supply [Source, V, Phase, Hz]		from Outdoor Unit, 230, Single, 50	
Power Input		kW	0.003
Running Current		A	0.05
Drain Hose* Size		mm O.D. 20 (VP-16)	
Dimensions [WxDxH]		mm 450x280x198	
Weight		kg 9.3	
Piping [diameter]	Branch [Indoor side]	Liquid	mm 6.35x5
		Gas	mm 9.52x4, 12.7x1
	Main [Outdoor side]	Liquid	mm 9.52
		Gas	mm 15.88
Connection Method		Flared	
Wiring	to Indoor Unit	3-wire + Earth wire	
	to Outdoor Unit	3-wire + Earth wire	

*To be locally purchased

Inverter Multi-Split System

MXZ-8A140VA

Connectable Indoor Units

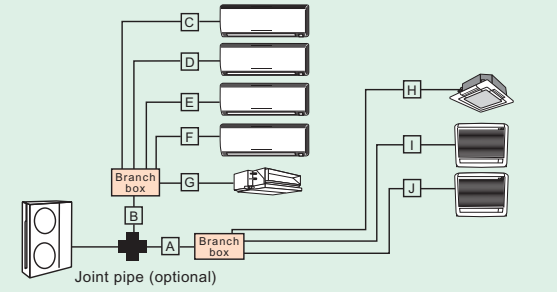
Class (kW)	Equivalent models
22 (2.2)	MSZ-GA22VA
25 (2.5)	MSZ-FB25VA, MSZ-GA25VA, MFZ-KA25VA, SLZ-KA25VA(L)
35 (3.5)	MSZ-FB35VA, MSZ-GB35VA, MFZ-KA35VA, SEZ-KD35VA, SLZ-KA35VA(L)
50 (5.0)	MSZ-FB50VA, MSZ-GB50VA, MFZ-KA50VA, SEZ-KD50VA, SLZ-KA50VA(L)
60 (6.0)	MSZ-GA60VA, SEZ-KD60VA, PLA-RP60BA
71 (7.1)	MSZ-GA71VA, SEZ-KD71VA, PEA-RP71AA, PLA-RP71BA

System Capacity Calculation:

To obtain the system capacity, first add up the ratings of all the indoor units connected and then find the standard capacity with the help of the figures below. The unit's quantities are limited in 2 to 8 units. Make sure that the total rated capacity selected will stay in a range of 4.4 ~ 18.5kW.

SLZ-KA35VA = 3.5 kW	} Total rated capacity 18.5 ≤ 18.5kW
SLZ-KA50VA = 5.0 kW	
MSZ-GA25VA x 4 = 2.5 x 4 = 10.0 kW	

Piping Length and Height Differential Table



		MAX
Total piping	(A+B+C+D+E+F+G+H+I+J)	115m
Outdoor → Branch Box	(A+B)	55m
Branch Box → indoor	(C+D+E+F+G+H+I+J)	60m
	(Each C, D, E, F, G, H, I, J)	15m
Outdoor → indoor	(Farthest)	70m
Height difference	Outdoor - Indoor	30m*
	Outdoor - Branch Box	30m
	Branch Box - Indoor	15m
	Indoor - Indoor	12m

* In case of installing the outdoor unit lower than indoor unit : 20m.

Additional Refrigerant Charge

Additional refrigerant charge is not necessary for this unit if the total pipe length (A + B + C + D + E + F + G + H + I + J) does not exceed 40m. If the total pipe length exceeds 40m, charge the unit with additional R410A refrigerant according to the pipe lengths, referring to the chart below.

Total piping length (A + B + C + D + E + F + G + H + I + J)	40m or less	40 - 50m	51 - 70m	71 - 90m	91 - 115m
Additional refrigerant charging amount	0kg (no need)	0.9kg	1.7kg	2.5kg	3.5kg

Outdoor Unit Specifications

MXZ-8A140VA Inverter Power Multi-Split Outdoor Unit (R410A)

TYPE		Inverter Multi-Split
MODEL NAME		MXZ-8A140VA
INDOOR COMBINATION		2 to 8 Indoor Units
COOL	Capacity [kW]	14.0
	Input *1 [kW]	3.79
	COP (In + out) *2	3.52
	Sound Level (Rated) [dB(A)]	50
	(Silent) [dB(A)]	47
	Current Running (Rated) [A]	16.55
Air Volume (High) [L/s]	1667	
HEAT	Capacity [kW]	16.0
	Input *1 [kW]	3.90
	COP (In + out) *2	3.91
	Sound Level (Rated) [dB(A)]	52
	Current Running (Rated) [A]	17.05
	Air Volume (High) [L/s]	1667
Current Starting [A]	14	
Current Running (Max.) [A]	29.5	
Total Capacity of all indoor units [kW]		4.4 to 18.5
OUTDOOR	Dimension (HxWxD) [mm]	950 x 330 x 1350
	Weight [kg]	128
EXT. PIPE	Liquid (diameter) [mm]	9.52
	Gas (diameter) [mm]	15.88
	Max. Length (Total) *3 [m]	115
	Max. Height *3 [m]	30
	Precharged [m]	40
Connection Method (Indoor / Outdoor side)		Flared / Flared
Power Supply [V,Phase,Hz]		230, Single, 50
OPERATION RANGE	Cooling [°C]	-5 / +46
	Heating [°C]	-15 / +21

External Wiring (Power supply intake, outdoor unit only)

The single-phase power supply is wired to the outdoor unit only.

The branch box and indoor units are powered by the outdoor unit through interconnecting wiring.

Breaker: Interrupting current - 40A / Performance characteristics - 40A, 30mA for 0.1 sec. or less.

IMPORTANT

Always use a current leakage breaker that is compatible with higher harmonics as this unit is equipped with an inverter.

The use of an inadequate breaker can cause the incorrect operation of the inverter.

*1 In case of connecting 3 units of MSZ-GA60VA. The Electrical data is only for outdoor unit.

*2 Including branch box and indoor units (3 units of MSZ-GA60VA).

*3 See Piping Length and Height Differential Table.

Rating Conditions Cooling — Indoor: 27°C DB, 19°C WB Outdoor: 35°C
(AS / NZS 3823) Heating — Indoor: 20°C DB Outdoor: 7°C DB, 6°C WB

MXZ-5A100VA Capacity Output Table

NOTE: Electrical data is for outdoor unit only.
Minimum connection of 2x Indoor Units.

Indoor units combination	Cooling capacity (kW)					Outdoor unit power consumption (kW)	Heating capacity (kW)					Outdoor unit power consumption (kW)		
	Unit A	Unit B	Unit C	Unit D	Unit E		Total	Unit A	Unit B	Unit C	Unit D		Unit E	Total
22	2.2	-	-	-	-	2.2 (1.4 - 3.0)	0.680 (0.400 - 0.920)	3.3	-	-	-	-	3.3 (1.2 - 4.2)	1.050 (0.340 - 1.380)
25	2.5	-	-	-	-	2.5 (1.4 - 3.3)	0.760 (0.400 - 1.010)	3.6	-	-	-	-	3.6 (1.2 - 4.5)	1.110 (0.340 - 1.510)
35	3.5	-	-	-	-	3.5 (1.5 - 4.3)	1.030 (0.400 - 1.290)	4.0	-	-	-	-	4.0 (1.2 - 4.8)	1.210 (0.330 - 1.570)
50	5.0	-	-	-	-	5.0 (1.6 - 5.6)	1.440 (0.420 - 1.630)	7.2	-	-	-	-	7.2 (1.4 - 8.2)	2.270 (0.330 - 2.710)
60	6.0	-	-	-	-	6.0 (0.6 - 6.6)	1.930 (0.400 - 2.130)	7.9	-	-	-	-	7.9 (1.4 - 8.6)	2.700 (0.330 - 3.060)
71	7.1	-	-	-	-	7.1 (1.7 - 7.4)	2.580 (0.410 - 2.710)	8.6	-	-	-	-	8.6 (1.6 - 9.2)	3.220 (0.360 - 3.520)
22 + 22	2.2	2.2	-	-	-	4.4 (2.0 - 5.4)	1.130 (0.600 - 1.600)	3.3	3.3	-	-	-	6.6 (1.8 - 7.2)	2.020 (0.480 - 2.760)
22 + 25	2.2	2.5	-	-	-	4.7 (2.0 - 5.8)	1.270 (0.600 - 1.770)	3.23	3.67	-	-	-	6.9 (1.8 - 8.7)	2.120 (0.480 - 3.000)
22 + 35	2.2	3.5	-	-	-	5.7 (2.0 - 6.6)	1.710 (0.600 - 2.200)	2.82	4.48	-	-	-	7.3 (1.8 - 9.2)	2.130 (0.480 - 3.110)
22 + 50	2.2	5.0	-	-	-	7.2 (2.0 - 7.7)	2.450 (0.560 - 2.710)	2.72	6.18	-	-	-	8.9 (1.8 - 9.9)	2.470 (0.460 - 3.140)
22 + 60	2.08	5.67	-	-	-	7.8 (2.0 - 8.0)	2.750 (0.560 - 3.050)	2.52	6.88	-	-	-	9.4 (1.8 - 9.9)	2.710 (0.460 - 3.140)
22 + 71	1.86	5.99	-	-	-	7.9 (2.0 - 8.2)	2.810 (0.560 - 3.200)	2.22	7.18	-	-	-	9.4 (1.8 - 9.9)	2.710 (0.460 - 3.140)
25 + 25	2.5	2.5	-	-	-	5.0 (2.0 - 6.2)	1.360 (0.580 - 1.950)	3.6	3.6	-	-	-	7.2 (1.8 - 9.1)	2.170 (0.480 - 3.140)
25 + 35	2.5	3.5	-	-	-	6.0 (2.0 - 7.1)	2.010 (0.540 - 2.540)	3.17	4.43	-	-	-	7.6 (1.8 - 9.5)	2.210 (0.480 - 3.230)
25 + 50	2.5	5.0	-	-	-	7.5 (2.0 - 8.5)	2.580 (0.560 - 3.200)	3.0	6.0	-	-	-	9.0 (1.8 - 10.1)	2.520 (0.460 - 3.260)
25 + 60	2.28	5.47	-	-	-	7.8 (2.0 - 8.6)	2.750 (0.560 - 3.280)	2.94	7.06	-	-	-	10.0 (1.8 - 10.6)	3.200 (0.460 - 3.240)
25 + 71	2.04	5.81	-	-	-	7.9 (2.0 - 8.7)	2.810 (0.560 - 3.320)	2.6	7.4	-	-	-	10.0 (1.8 - 10.7)	3.200 (0.460 - 3.450)
35 + 35	3.5	3.5	-	-	-	7.0 (2.0 - 7.1)	2.400 (0.540 - 2.550)	4.0	4.0	-	-	-	8.0 (1.8 - 9.8)	2.370 (0.480 - 3.230)
35 + 50	3.19	4.56	-	-	-	7.8 (2.0 - 8.8)	2.760 (0.560 - 3.220)	4.12	5.88	-	-	-	10.0 (1.8 - 10.6)	3.000 (0.460 - 3.240)
35 + 60	2.89	4.96	-	-	-	7.9 (2.0 - 8.8)	2.730 (0.560 - 3.180)	3.68	6.32	-	-	-	10.0 (1.8 - 10.7)	3.000 (0.460 - 3.450)
35 + 71	2.62	5.33	-	-	-	8.0 (2.0 - 8.8)	2.780 (0.560 - 3.180)	3.3	6.7	-	-	-	10.0 (1.8 - 11.1)	3.000 (0.460 - 3.520)
50 + 50	3.95	3.95	-	-	-	7.9 (2.1 - 8.8)	2.780 (0.590 - 3.160)	5.0	5.0	-	-	-	10.0 (1.9 - 11.4)	2.780 (0.440 - 3.600)
50 + 60	3.64	4.36	-	-	-	8.0 (2.1 - 8.8)	2.800 (0.570 - 3.120)	4.55	5.45	-	-	-	10.0 (1.9 - 11.4)	2.780 (0.440 - 3.600)
50 + 71	3.43	4.87	-	-	-	8.3 (2.1 - 8.9)	2.910 (0.550 - 3.200)	4.13	5.87	-	-	-	10.0 (1.9 - 11.5)	2.780 (0.440 - 3.700)
60 + 60	4.15	4.15	-	-	-	8.3 (2.1 - 8.9)	2.910 (0.550 - 3.200)	5.0	5.0	-	-	-	10.0 (1.9 - 11.5)	2.780 (0.440 - 3.700)
60 + 71	3.89	4.61	-	-	-	8.5 (2.1 - 8.9)	3.100 (0.550 - 3.200)	4.58	5.42	-	-	-	10.0 (1.9 - 11.6)	2.780 (0.440 - 3.730)
71 + 71	4.4	4.4	-	-	-	8.8 (2.1 - 9.4)	3.100 (0.550 - 3.400)	5.0	5.0	-	-	-	10.0 (1.9 - 11.7)	2.780 (0.440 - 3.780)
22 + 22 + 22	2.2	2.2	2.2	-	-	6.6 (2.9 - 8.1)	1.860 (0.690 - 2.410)	2.9	2.9	2.9	-	-	8.7 (2.6 - 10.6)	2.150 (0.530 - 3.060)
22 + 22 + 25	2.2	2.2	2.5	-	-	6.9 (2.9 - 8.3)	1.970 (0.670 - 2.510)	2.8	2.81	3.19	-	-	8.8 (2.6 - 11.1)	2.170 (0.530 - 3.330)
22 + 22 + 35	2.14	2.14	3.42	-	-	7.7 (2.9 - 9.0)	2.310 (0.690 - 2.970)	2.78	2.78	4.44	-	-	10.0 (2.6 - 12.6)	2.810 (0.530 - 3.710)
22 + 22 + 50	1.84	1.84	4.17	-	-	7.9 (2.9 - 9.0)	2.320 (0.700 - 2.920)	2.57	2.57	5.86	-	-	11.0 (2.6 - 12.6)	2.900 (0.510 - 3.350)
22 + 22 + 60	1.68	1.68	4.59	-	-	8.0 (2.9 - 9.0)	2.370 (0.680 - 2.880)	2.33	2.33	6.35	-	-	11.0 (2.6 - 12.6)	2.890 (0.510 - 3.340)
22 + 22 + 71	1.53	1.53	4.94	-	-	8.0 (2.9 - 9.0)	2.390 (0.680 - 2.880)	2.1	2.1	6.8	-	-	11.0 (2.6 - 12.6)	2.890 (0.510 - 3.340)
22 + 25 + 25	2.2	2.5	2.5	-	-	7.2 (2.9 - 8.9)	2.100 (0.690 - 2.940)	2.72	3.09	3.09	-	-	8.9 (2.6 - 12.6)	2.170 (0.530 - 3.420)
22 + 25 + 35	2.08	2.36	3.31	-	-	7.8 (2.9 - 9.0)	2.350 (0.690 - 2.970)	2.68	3.05	4.27	-	-	10.0 (2.6 - 12.6)	2.750 (0.530 - 3.700)
22 + 25 + 50	1.79	2.04	4.07	-	-	7.9 (2.9 - 9.0)	2.370 (0.700 - 2.920)	2.49	2.84	5.67	-	-	11.0 (2.6 - 12.6)	2.880 (0.510 - 3.340)
22 + 25 + 60	1.64	1.87	4.49	-	-	8.0 (2.9 - 9.0)	2.390 (0.680 - 2.880)	2.26	2.57	6.17	-	-	11.0 (2.6 - 12.6)	2.870 (0.510 - 3.330)
22 + 25 + 71	1.49	1.69	4.82	-	-	8.0 (2.9 - 9.0)	2.390 (0.680 - 2.880)	2.05	2.33	6.62	-	-	11.0 (2.6 - 12.6)	2.870 (0.510 - 3.330)
22 + 35 + 35	1.87	2.99	2.99	-	-	7.9 (2.9 - 9.0)	2.350 (0.690 - 2.920)	2.40	3.80	3.80	-	-	10.0 (2.6 - 12.6)	2.800 (0.530 - 3.700)
22 + 35 + 50	1.63	2.58	3.69	-	-	7.9 (2.9 - 9.0)	2.320 (0.700 - 2.890)	2.26	3.60	5.14	-	-	11.0 (2.7 - 12.6)	2.870 (0.510 - 3.330)
22 + 35 + 60	1.5	2.4	4.1	-	-	8.0 (2.9 - 9.0)	2.350 (0.680 - 2.860)	2.07	3.29	5.64	-	-	11.0 (2.7 - 12.6)	2.860 (0.510 - 3.320)
22 + 35 + 71	1.46	2.32	4.72	-	-	8.5 (2.9 - 9.4)	2.510 (0.680 - 3.000)	1.89	3.01	6.10	-	-	11.0 (2.7 - 12.6)	2.860 (0.510 - 3.320)
22 + 50 + 50	1.5	3.4	3.4	-	-	8.3 (2.9 - 9.4)	2.400 (0.680 - 3.050)	1.98	4.51	4.51	-	-	11.0 (2.7 - 12.6)	2.720 (0.490 - 3.270)
22 + 50 + 60	1.42	3.22	3.86	-	-	8.5 (2.9 - 9.5)	2.500 (0.660 - 3.020)	1.83	4.17	5.0	-	-	11.0 (2.7 - 12.6)	2.710 (0.490 - 3.390)
22 + 50 + 71	1.38	3.15	4.47	-	-	9.0 (2.9 - 9.6)	2.650 (0.660 - 3.050)	1.69	3.85	5.46	-	-	11.0 (2.7 - 12.6)	2.710 (0.490 - 3.380)
22 + 60 + 60	1.4	3.8	3.8	-	-	9.0 (2.9 - 9.6)	2.650 (0.660 - 3.050)	1.70	4.65	4.65	-	-	11.0 (2.7 - 12.6)	2.710 (0.490 - 3.380)
22 + 60 + 71	1.29	3.53	4.18	-	-	9.1 (2.9 - 10.1)	2.680 (0.600 - 3.210)	1.58	4.31	5.11	-	-	11.0 (2.7 - 12.6)	2.710 (0.490 - 3.380)
25 + 25 + 25	2.5	2.5	2.5	-	-	7.5 (2.9 - 9.0)	2.250 (0.690 - 3.010)	3.00	3.00	3.00	-	-	9.0 (2.6 - 12.6)	2.170 (0.530 - 3.750)
25 + 25 + 35	2.28	2.28	3.19	-	-	7.8 (2.9 - 9.0)	2.350 (0.690 - 2.970)	2.82	2.82	3.96	-	-	9.6 (2.6 - 12.6)	2.340 (0.530 - 3.750)
25 + 25 + 50	1.98	1.98	3.94	-	-	7.9 (2.9 - 9.0)	2.370 (0.700 - 2.920)	2.75	2.75	5.50	-	-	11.0 (2.6 - 12.6)	2.870 (0.510 - 3.450)
25 + 25 + 60	1.82	1.82	4.36	-	-	8.0 (2.9 - 9.0)	2.390 (0.680 - 2.880)	2.50	2.50	6.00	-	-	11.0 (2.6 - 12.6)	2.860 (0.510 - 3.440)
25 + 25 + 71	1.71	1.71	4.88	-	-	8.3 (2.9 - 9.4)	2.390 (0.680 - 3.050)	2.27	2.27	6.46	-	-	11.0 (2.6 - 12.6)	2.860 (0.510 - 3.440)
25 + 35 + 35	2.07	2.89	2.89	-	-	7.9 (2.9 - 9.0)	2.350 (0.690 - 2.920)	2.64	3.68	3.68	-	-	10.0 (2.6 - 12.6)	2.730 (0.530 - 3.700)
25 + 35 + 50	1.82	2.54	3.64	-	-	8.0 (2.9 - 9.0)	2.380 (0.700 - 2.890)	2.5	3.5	5.0	-	-	11.0 (2.7 - 12.6)	2.550 (0.510 - 3.440)
25 + 35 + 60	1.73	2.42	4.15	-	-	8.3 (2.9 - 9.4)	2.400 (0.680 - 3.000)	2.29	3.21	5.50	-	-	11.0 (2.7 - 12.6)	2.860 (0.510 - 3.430)
25 + 35 + 71	1.62	2.27	4.61	-	-	8.5 (2.9 - 9.5)	2.520 (0.680 - 3.020)	2.10	2.94	5.96	-	-	11.0 (2.7 - 12.6)	2.850 (0.510 - 3.260)
25 + 50 + 50	1.7	3.4	3.4	-	-	8.5 (2.9 - 9.5)	2.520 (0.660 - 3.020)	2.20	4.40	4.40	-	-	11.0 (2.7 - 12.6)	2.700 (0.490 - 3.260)
25 + 50 + 60	1.57	3.15	3.78	-	-	8.5 (2.9 - 9.5)	2.500 (0.660 - 3.020)	2.04	4.07	4.89	-	-	11.0 (2.7 - 12.6)	2.700 (0.490 - 3.380)
25 + 50 + 71	1.54	3.08	4.38	-	-	9.0 (2.9 - 9.6)	2.650 (0.660 - 3.050)	1.88	3.77	5.35	-	-	11.0 (2.7 - 12.6)	2.700 (0.490 - 3.250)
25 + 60 + 60	1.56	3.72	3.72	-	-	9.0 (2.9 - 9.6)	2.650 (0.660 - 3.050)	1.90	4.55	4.55	-	-	11.0 (2.7 - 12.6)	2.700 (0.490 - 3.250)
25 + 60 + 71	1.47	3.54	4.19	-	-	9.2 (2.9 - 10.1)	2.720 (0.660 - 3.200)	1.76	4.23	5.01	-	-	11.0 (2.7 - 12.6)	2.700 (0.490 - 3.250)
35 + 35 + 35	2.65	2.65	2.65	-	-	8.0 (2.9 - 9.0)	2.280 (0.720 - 2.910)	3.33	3.33	3.33	-	-	10.0 (2.6 - 12.6)	2.730 (0.530 - 3.700)
35 + 35 + 50	2.42	2.42	3.46	-	-	8.3 (2.9 - 9.4)	2.400 (0.700 - 3.000)	3.21	3.21	4.58	-	-	11.0 (2.7 - 12.6)	2.850 (0.510 - 3.430)
35 + 35 + 60	2.29	2.29	3.92	-	-	8.5 (2.9 - 9.5)	2.510 (0.680 - 3.020)	2.96	2.96	5.08	-	-	11.0 (2.7 - 12.6)	2.850 (0.510 - 3.430)
35 + 35 + 71	2.16	2.16	4.38	-	-	8.7 (2.9 - 9.6)	2.550 (0.680 - 3.050)	2.73	2.73	5.54	-	-	11.0 (2.7 - 12.6)	2.850 (0.510 - 3.430)
35 + 50 + 50	2.22	3.19	3.19	-	-	8.6 (2.9 - 9.5)	2.530 (0.680 - 3.020)	2.86	4.07	4.07	-	-	11.0 (2.7 - 12.6)	2.700 (0.490 - 3.250)
35 + 50 + 60	2.17	3.1	3.73	-	-	9.0 (2.9 - 9.6)	2.650 (0.660 - 3.050)	2.66	3.79	4.55	-	-	11.0 (2.7 - 12.6)	2.700 (0.490 - 3.250)
35 + 50 + 71	2.06	2.95	4.19	-	-	9.2 (2.9 - 10.1)	2.710 (0.660 - 3.200)	2.46	3.53	5.01	-	-	11.0 (2.7 - 12.6)	2.700 (0.490 - 3.250)
35 + 60 + 60	2.08	3.56	3.56	-	-	9.2 (2.9 - 10.1)	2.710 (0.660 - 3.200)	2.48	4.26	4.26	-	-	11.0 (2.7 - 12.6)	2.700 (0.490 - 3.250)
35 + 60 + 71	1.96	3.36	3.98	-	-	9.3 (2.9 - 10.4)	2.700 (0.660 - 3.300)	2.32	3.98	4.7	-	-	11.0 (2.7 - 12.6)	2.700 (0.490 - 3.250)
50 + 50 + 50	3.06	3.07	3.07	-	-	9.2 (2.9 - 10.4)	2.710 (0.660 - 3.300)	3.66	3.67	3.67	-	-	11.0 (2.7 - 12.6)	2.700 (0.490 - 3.250)
50 + 50 + 60	2.91	2.91	3.48	-	-	9.3 (2.9								

MXZ-5A100VA Capacity Output Table

NOTE: Electrical data is for outdoor unit only.
Minimum connection of 2x Indoor Units.

Indoor units combination	Cooling capacity (kW)					Outdoor unit power consumption (kW)	Heating capacity (kW)					Outdoor unit power consumption (kW)		
	Unit A	Unit B	Unit C	Unit D	Unit E		Total	Unit A	Unit B	Unit C	Unit D		Unit E	Total
22 + 25 + 25 + 50	1.5	1.7	1.7	3.4	-	8.3 (3.7 - 9.5)	2.230 (0.790 - 2.710)	1.98	2.25	2.25	4.52	-	11.0 (3.5 - 13.3)	2.380 (0.580 - 3.890)
22 + 25 + 25 + 60	1.42	1.61	1.61	3.86	-	8.5 (3.7 - 9.6)	2.300 (0.770 - 2.750)	1.83	2.08	2.08	5.01	-	11.0 (3.5 - 13.3)	2.360 (0.580 - 3.880)
22 + 25 + 25 + 71	1.38	1.57	1.57	4.48	-	9.0 (3.7 - 10.1)	2.430 (0.770 - 2.890)	1.69	1.92	1.92	5.47	-	11.0 (3.5 - 13.3)	2.360 (0.580 - 3.880)
22 + 25 + 35 + 35	1.57	1.77	2.48	2.48	-	8.2 (3.7 - 9.4)	2.200 (0.810 - 2.700)	2.07	2.35	3.29	3.29	-	11.0 (3.4 - 13.3)	2.520 (0.590 - 3.900)
22 + 25 + 35 + 50	1.42	1.61	2.25	3.22	-	8.5 (3.7 - 9.6)	2.300 (0.810 - 2.750)	1.83	2.08	2.92	4.17	-	11.0 (3.5 - 13.3)	2.350 (0.580 - 3.890)
22 + 25 + 35 + 60	1.4	1.58	2.22	3.8	-	9.0 (3.7 - 10.1)	2.450 (0.770 - 2.890)	1.7	1.94	2.71	4.65	-	11.0 (3.5 - 13.3)	2.340 (0.580 - 3.880)
22 + 25 + 35 + 71	1.29	1.47	2.06	4.18	-	9.0 (3.7 - 10.2)	2.430 (0.770 - 2.920)	1.58	1.80	2.52	5.1	-	11.0 (3.5 - 13.3)	2.340 (0.580 - 3.880)
22 + 25 + 50 + 50	1.35	1.53	3.06	3.06	-	9.0 (3.7 - 10.1)	2.450 (0.770 - 2.890)	1.65	1.87	3.74	3.74	-	11.0 (3.5 - 13.3)	2.260 (0.580 - 3.880)
22 + 25 + 50 + 60	1.26	1.43	2.87	3.44	-	9.0 (3.7 - 10.6)	2.430 (0.770 - 3.030)	1.54	1.75	3.5	4.21	-	11.0 (3.5 - 13.3)	2.250 (0.580 - 3.870)
22 + 25 + 50 + 71	1.22	1.38	2.77	3.93	-	9.3 (3.7 - 10.7)	2.420 (0.770 - 3.030)	1.44	1.64	3.27	4.65	-	11.0 (3.5 - 13.3)	2.250 (0.580 - 3.900)
22 + 35 + 35 + 35	1.48	2.34	2.34	2.34	-	8.5 (3.7 - 9.5)	2.300 (0.810 - 2.710)	1.91	3.03	3.03	3.03	-	11.0 (3.4 - 13.3)	2.550 (0.590 - 3.900)
22 + 35 + 35 + 50	1.39	2.22	2.22	3.17	-	9.0 (3.7 - 9.6)	2.450 (0.790 - 2.750)	1.7	2.71	2.71	3.88	-	11.0 (3.5 - 13.3)	2.350 (0.580 - 3.890)
22 + 35 + 35 + 60	1.3	2.07	2.07	3.56	-	9.0 (3.7 - 10.1)	2.430 (0.770 - 2.890)	1.59	2.53	2.53	4.35	-	11.0 (3.5 - 13.3)	2.340 (0.580 - 3.880)
22 + 35 + 35 + 71	1.25	2.0	2.0	4.05	-	9.3 (3.7 - 10.6)	2.450 (0.770 - 3.030)	1.48	2.36	2.36	4.8	-	11.0 (3.5 - 13.3)	2.340 (0.580 - 3.900)
22 + 35 + 50 + 50	1.31	2.07	2.96	2.96	-	9.3 (3.7 - 10.6)	2.430 (0.770 - 3.030)	1.54	2.45	3.5	3.51	-	11.0 (3.5 - 13.3)	2.240 (0.580 - 3.880)
25 + 25 + 25 + 25	1.98	1.98	1.98	1.98	-	7.9 (3.7 - 9.2)	2.150 (0.810 - 2.670)	2.5	2.5	2.5	2.5	-	10.0 (3.4 - 13.3)	2.160 (0.590 - 3.900)
25 + 25 + 25 + 35	1.82	1.82	1.82	2.54	-	8.0 (3.7 - 9.2)	2.220 (0.810 - 2.650)	2.27	2.27	2.27	3.19	-	10.0 (3.4 - 13.3)	2.150 (0.590 - 3.900)
25 + 25 + 25 + 50	1.70	1.70	1.70	3.40	-	8.5 (3.7 - 9.5)	2.300 (0.790 - 2.710)	2.2	2.2	2.2	4.4	-	11.0 (3.5 - 13.3)	2.360 (0.580 - 3.890)
25 + 25 + 25 + 60	1.59	1.59	1.59	3.83	-	8.6 (3.7 - 9.6)	2.320 (0.770 - 2.750)	2.04	2.04	2.04	4.88	-	11.0 (3.5 - 13.3)	2.350 (0.580 - 3.880)
25 + 25 + 25 + 71	1.54	1.54	1.54	4.38	-	9.0 (3.7 - 10.1)	2.430 (0.770 - 2.890)	1.88	1.88	1.88	5.36	-	11.0 (3.5 - 13.3)	2.350 (0.580 - 3.880)
25 + 25 + 35 + 35	1.73	1.73	2.42	2.42	-	8.3 (3.7 - 9.5)	2.230 (0.810 - 2.710)	2.29	2.29	3.21	3.21	-	11.0 (3.4 - 13.3)	2.550 (0.590 - 3.900)
25 + 25 + 35 + 50	1.67	1.67	2.33	3.33	-	8.7 (3.7 - 9.6)	2.420 (0.790 - 2.750)	2.04	2.04	2.85	4.07	-	11.0 (3.5 - 13.3)	2.330 (0.580 - 3.890)
25 + 25 + 35 + 60	1.55	1.55	2.17	3.73	-	9.0 (3.7 - 10.1)	2.450 (0.770 - 2.890)	1.9	1.9	2.66	4.54	-	11.0 (3.5 - 13.3)	2.300 (0.580 - 3.880)
25 + 25 + 35 + 71	1.47	1.47	2.06	4.2	-	9.2 (3.7 - 10.6)	2.500 (0.770 - 3.030)	1.76	1.76	2.47	5.01	-	11.0 (3.5 - 13.3)	2.300 (0.580 - 3.880)
25 + 25 + 50 + 50	1.5	1.5	3.0	3.0	-	9.0 (3.7 - 10.1)	2.410 (0.770 - 2.890)	1.83	1.83	3.67	3.67	-	11.0 (3.5 - 13.3)	2.250 (0.580 - 3.880)
25 + 25 + 50 + 60	1.45	1.45	2.91	3.49	-	9.3 (3.7 - 10.7)	2.450 (0.770 - 3.030)	1.72	1.72	3.44	4.12	-	11.0 (3.5 - 13.3)	2.240 (0.580 - 3.880)
25 + 25 + 50 + 71	1.39	1.39	2.78	3.94	-	9.5 (3.7 - 10.7)	2.500 (0.770 - 3.030)	1.61	1.61	3.22	4.56	-	11.0 (3.5 - 13.3)	2.240 (0.580 - 3.880)
25 + 35 + 35 + 35	1.63	2.29	2.29	2.29	-	8.5 (3.7 - 9.6)	2.300 (0.810 - 2.610)	2.12	2.96	2.96	2.96	-	11.0 (3.4 - 13.3)	2.520 (0.590 - 3.900)
25 + 35 + 35 + 50	1.55	2.17	2.17	3.11	-	9.0 (3.7 - 10.1)	2.430 (0.790 - 2.890)	1.89	2.66	2.66	3.79	-	11.0 (3.5 - 13.3)	2.290 (0.580 - 3.890)
25 + 35 + 35 + 60	1.48	2.08	2.08	3.56	-	9.2 (3.7 - 10.1)	2.500 (0.790 - 2.890)	1.77	2.48	2.48	4.27	-	11.0 (3.5 - 13.3)	2.290 (0.580 - 3.880)
25 + 35 + 35 + 71	1.4	1.96	1.96	3.98	-	9.3 (3.7 - 10.6)	2.450 (0.770 - 3.030)	1.66	2.32	2.32	4.7	-	11.0 (3.5 - 13.3)	2.290 (0.580 - 3.900)
35 + 35 + 35 + 35	2.25	2.25	2.25	2.25	-	9.0 (3.7 - 10.1)	2.420 (0.810 - 2.920)	2.75	2.75	2.75	2.75	-	11.0 (3.4 - 13.3)	2.500 (0.590 - 3.900)
35 + 35 + 35 + 50	2.08	2.08	2.08	2.96	-	9.2 (3.7 - 10.6)	2.490 (0.770 - 3.030)	2.48	2.48	2.48	3.56	-	11.0 (3.5 - 13.3)	2.310 (0.580 - 3.890)
35 + 35 + 35 + 60	1.97	1.97	1.97	3.39	-	9.3 (3.7 - 10.6)	2.450 (0.770 - 3.030)	2.33	2.33	2.33	4.01	-	11.0 (3.5 - 13.3)	2.300 (0.590 - 3.880)
22 + 22 + 22 + 22 + 22	2.0	2.0	2.0	2.0	2.0	10.0 (3.9 - 11.0)	2.935 (0.780 - 3.500)	2.4	2.4	2.4	2.4	2.4	12.0 (4.1 - 14.0)	2.835 (0.780 - 4.100)
22 + 22 + 22 + 22 + 25	1.95	1.95	1.95	1.95	2.20	10.0 (3.9 - 11.0)	2.935 (0.780 - 3.500)	2.34	2.34	2.34	2.34	2.65	12.0 (4.1 - 14.0)	2.835 (0.780 - 4.100)
22 + 22 + 22 + 22 + 35	1.79	1.79	1.79	1.79	2.84	10.0 (3.9 - 11.0)	2.935 (0.780 - 3.500)	2.15	2.15	2.15	2.15	3.40	12.0 (4.1 - 14.0)	2.835 (0.780 - 4.100)
22 + 22 + 22 + 22 + 50	1.59	1.59	1.59	1.59	3.64	10.0 (3.9 - 11.0)	2.915 (0.790 - 3.490)	1.91	1.91	1.91	1.91	4.36	12.0 (4.1 - 14.0)	2.815 (0.790 - 4.080)
22 + 22 + 22 + 22 + 60	1.49	1.49	1.49	1.49	4.04	10.0 (3.9 - 11.0)	2.905 (0.800 - 3.480)	1.78	1.78	1.78	1.78	4.88	12.0 (4.1 - 14.0)	2.805 (0.800 - 4.070)
22 + 22 + 22 + 22 + 71	1.38	1.38	1.38	1.38	4.48	10.0 (3.9 - 11.0)	2.905 (0.800 - 3.480)	1.66	1.66	1.66	1.66	5.36	12.0 (4.1 - 14.0)	2.805 (0.800 - 4.070)
22 + 22 + 22 + 25 + 25	1.90	1.90	1.90	2.15	2.15	10.0 (3.9 - 11.0)	2.935 (0.780 - 3.500)	2.28	2.28	2.28	2.58	2.58	12.0 (4.1 - 14.0)	2.835 (0.780 - 4.100)
22 + 22 + 22 + 25 + 35	1.75	1.75	1.75	1.97	2.78	10.0 (3.9 - 11.0)	2.935 (0.780 - 3.500)	2.1	2.1	2.1	2.38	3.32	12.0 (4.1 - 14.0)	2.835 (0.780 - 4.100)
22 + 22 + 22 + 25 + 50	1.56	1.56	1.56	1.77	3.55	10.0 (3.9 - 11.0)	2.915 (0.790 - 3.490)	1.87	1.87	1.87	2.13	4.26	12.0 (4.1 - 14.0)	2.815 (0.790 - 4.080)
22 + 22 + 22 + 25 + 60	1.46	1.46	1.46	1.66	3.96	10.0 (3.9 - 11.0)	2.905 (0.800 - 3.480)	1.75	1.75	1.75	1.99	4.76	12.0 (4.1 - 14.0)	2.805 (0.800 - 4.070)
22 + 22 + 22 + 25 + 71	1.36	1.36	1.36	1.54	4.38	10.0 (3.9 - 11.0)	2.905 (0.800 - 3.480)	1.63	1.63	1.63	1.85	5.26	12.0 (4.1 - 14.0)	2.805 (0.800 - 4.070)
22 + 22 + 22 + 25 + 50	1.62	1.62	1.62	2.57	2.57	10.0 (3.9 - 11.0)	2.935 (0.780 - 3.500)	1.94	1.94	1.94	3.09	3.09	12.0 (4.1 - 14.0)	2.835 (0.780 - 4.100)
22 + 22 + 22 + 35 + 50	1.46	1.46	1.46	2.32	3.3	10.0 (3.9 - 11.0)	2.915 (0.790 - 3.490)	1.75	1.75	1.75	2.78	3.97	12.0 (4.1 - 14.0)	2.815 (0.790 - 4.080)
22 + 22 + 22 + 35 + 60	1.37	1.37	1.37	2.17	3.72	10.0 (3.9 - 11.0)	2.905 (0.800 - 3.480)	1.64	1.64	1.64	2.61	4.47	12.0 (4.1 - 14.0)	2.805 (0.800 - 4.070)
22 + 22 + 22 + 35 + 71	1.28	1.28	1.28	2.03	4.13	10.0 (3.9 - 11.0)	2.935 (0.780 - 3.500)	1.53	1.53	1.53	2.44	4.95	12.0 (4.1 - 14.0)	2.835 (0.780 - 4.100)
22 + 22 + 25 + 25 + 25	1.85	1.85	2.1	2.1	2.1	10.0 (3.9 - 11.0)	2.935 (0.780 - 3.500)	2.22	2.22	2.52	2.52	2.52	12.0 (4.1 - 14.0)	2.835 (0.780 - 4.100)
22 + 22 + 25 + 25 + 35	1.71	1.71	1.94	1.94	2.7	10.0 (3.9 - 11.0)	2.935 (0.780 - 3.500)	2.04	2.04	2.33	2.33	3.26	12.0 (4.1 - 14.0)	2.835 (0.780 - 4.100)
22 + 22 + 25 + 25 + 50	1.53	1.53	1.74	1.74	3.46	10.0 (3.9 - 11.0)	2.915 (0.790 - 3.490)	1.83	1.83	2.08	2.08	4.18	12.0 (4.1 - 14.0)	2.815 (0.790 - 4.080)
22 + 22 + 25 + 25 + 60	1.43	1.43	1.62	1.62	3.9	10.0 (3.9 - 11.0)	2.905 (0.800 - 3.480)	1.71	1.71	1.95	1.95	4.68	12.0 (4.1 - 14.0)	2.805 (0.800 - 4.070)
22 + 22 + 25 + 25 + 71	1.33	1.33	1.52	1.52	4.3	10.0 (3.9 - 11.0)	2.935 (0.780 - 3.500)	1.6	1.6	1.82	1.82	5.16	12.0 (4.1 - 14.0)	2.835 (0.780 - 4.100)
22 + 22 + 25 + 35 + 35	1.58	1.58	1.8	2.52	2.52	10.0 (3.9 - 11.0)	2.935 (0.780 - 3.500)	1.9	1.9	2.16	3.02	3.02	12.0 (4.1 - 14.0)	2.835 (0.780 - 4.100)
22 + 22 + 25 + 35 + 50	1.43	1.43	1.62	2.27	3.25	10.0 (3.9 - 11.0)	2.915 (0.790 - 3.490)	1.71	1.71	1.95	2.73	3.9	12.0 (4.1 - 14.0)	2.815 (0.790 - 4.080)
22 + 22 + 35 + 35 + 35	1.47	1.48	2.35	2.35	2.35	10.0 (3.9 - 11.0)	2.935 (0.780 - 3.500)	1.77	1.77	2.82	2.82	2.82	12.0 (4.1 - 14.0)	2.835 (0.780 - 4.100)
22 + 25 + 25 + 25 + 25	1.8	2.05	2.05	2.05	2.05	10.0 (3.9 - 11.0)	2.935 (0.780 - 3.500)	2.16	2.46	2.46	2.46	2.46	12.0 (4.1 - 14.0)	2.835 (0.780 - 4.100)
22 + 25 + 25 + 25 + 35	1.67	1.89	1.89	1.89	2.66	10.0 (3.9 - 11.0)	2.935 (0.780 - 3.500)	2.00	2.27	2.27	2.27	3.19	12.0 (4.1 - 14.0)	2.835 (0.780 - 4.100)
22 + 25 + 25 + 25 + 50	1.5	1.7	1.7	1.7	3.4	10.0 (3.9 - 11.0)	2.915 (0.790 - 3.490)	1.8	2.04	2.04	2.04	4.08	12.0 (4.1 - 14.0)	2.815 (0.790 - 4.080)
22 + 25 + 25 + 25 + 60	1.4	1.59	1.59	1.59	3.83	10.0 (3.9 - 11.0)	2.905 (0.800 - 3.480)	1.68	1.91	1.91	1.91	4.59	12.0 (4.1 - 14.0)	2.805 (0.800 - 4.070)
22 + 25 + 25 + 25 + 71	1.3	1.49	1.49	1.49	4.23	10.0 (3.9 - 11.0)	2.935 (0.780 - 3.500)	1.57	1.79	1.79	1.79	5.07	12.0 (4.1 - 14.0)	2.835 (0.780 - 4.100)
22 + 25 + 25 + 35 + 35	1.56	1.76	1											

MXZ-4A80VA Capacity Output Table

NOTE: Electrical data is for outdoor unit only.
Minimum connection of 2x Indoor Units.

Indoor units combination	Cooling capacity (kW)				Outdoor unit power consumption (kW)	Heating capacity (kW)				Outdoor unit power consumption (kW)		
	Unit A	Unit B	Unit C	Unit D		Total	Unit A	Unit B	Unit C		Unit D	Total
22	2.2	-	-	-	2.2 (1.4 - 3.0)	0.680 (0.400 - 0.920)	3.3	-	-	-	3.3 (1.2 - 4.2)	1.050 (0.340 - 1.380)
25	2.5	-	-	-	2.5 (1.4 - 3.3)	0.760 (0.400 - 1.010)	3.6	-	-	-	3.6 (1.2 - 4.5)	1.110 (0.340 - 1.510)
35	3.5	-	-	-	3.5 (1.5 - 4.3)	1.030 (0.400 - 1.290)	4.0	-	-	-	4.0 (1.2 - 4.8)	1.210 (0.330 - 1.570)
50	5.0	-	-	-	5.0 (1.6 - 5.6)	1.440 (0.420 - 1.630)	7.2	-	-	-	7.2 (1.4 - 8.2)	2.270 (0.330 - 2.710)
60	6.0	-	-	-	6.0 (1.6 - 6.6)	1.930 (0.400 - 2.130)	7.9	-	-	-	7.9 (1.4 - 8.6)	2.700 (0.330 - 3.060)
71	7.1	-	-	-	7.1 (1.7 - 7.4)	2.580 (0.410 - 2.710)	8.6	-	-	-	8.6 (1.6 - 9.2)	3.220 (0.360 - 3.520)
22 + 22	2.2	2.2	-	-	4.4 (2.0 - 5.4)	1.130 (0.600 - 1.600)	3.3	3.3	-	-	6.6 (1.8 - 7.2)	2.020 (0.480 - 2.760)
22 + 25	2.2	2.5	-	-	4.7 (2.0 - 5.8)	1.270 (0.600 - 1.770)	3.23	3.67	-	-	6.9 (1.8 - 8.7)	2.120 (0.480 - 3.000)
22 + 35	2.2	3.5	-	-	5.7 (2.0 - 6.6)	1.710 (0.600 - 2.200)	2.82	4.48	-	-	7.3 (1.8 - 9.2)	2.130 (0.480 - 3.110)
22 + 50	2.2	5.0	-	-	7.2 (2.0 - 7.7)	2.450 (0.560 - 2.710)	2.72	6.2	-	-	8.9 (1.8 - 9.9)	2.470 (0.460 - 3.140)
22 + 60	1.75	6.0	-	-	7.75 (2.0 - 8.0)	2.750 (0.560 - 3.050)	2.52	6.88	-	-	9.4 (1.8 - 9.9)	2.710 (0.460 - 3.140)
22 + 71	1.66	6.19	-	-	7.85 (2.0 - 8.2)	2.810 (0.560 - 3.200)	2.22	7.18	-	-	9.4 (1.8 - 9.9)	2.710 (0.460 - 3.140)
25 + 25	2.5	2.5	-	-	5.0 (2.0 - 6.2)	1.360 (0.580 - 1.950)	3.6	3.6	-	-	7.2 (1.8 - 9.1)	2.170 (0.480 - 3.140)
25 + 35	2.5	3.5	-	-	6.0 (2.0 - 7.1)	2.010 (0.540 - 2.540)	3.17	4.43	-	-	7.6 (1.8 - 9.5)	2.210 (0.480 - 3.230)
25 + 50	2.5	5.0	-	-	7.5 (2.0 - 8.5)	2.580 (0.560 - 3.200)	3.0	6.0	-	-	9.0 (1.8 - 10.1)	2.520 (0.460 - 3.260)
25 + 60	2.11	5.64	-	-	7.75 (2.0 - 8.6)	2.750 (0.560 - 3.280)	2.76	6.64	-	-	9.4 (1.8 - 10.1)	2.710 (0.460 - 3.260)
25 + 71	2.01	5.84	-	-	7.85 (2.0 - 8.7)	2.810 (0.560 - 3.320)	2.42	6.98	-	-	9.4 (1.8 - 10.1)	2.710 (0.460 - 3.260)
35 + 35	3.5	3.5	-	-	7.0 (2.0 - 7.1)	2.400 (0.540 - 2.550)	4.0	4.0	-	-	8.0 (1.8 - 9.8)	2.370 (0.480 - 3.230)
35 + 50	3.1	4.65	-	-	7.75 (2.0 - 8.8)	2.760 (0.560 - 3.220)	3.87	5.53	-	-	9.4 (1.8 - 10.5)	2.560 (0.460 - 3.420)
35 + 60	2.61	5.24	-	-	7.85 (2.0 - 8.8)	2.730 (0.560 - 3.180)	3.46	5.94	-	-	9.4 (1.8 - 10.5)	2.560 (0.460 - 3.420)
35 + 71	2.51	5.44	-	-	7.95 (2.0 - 8.8)	2.780 (0.560 - 3.180)	3.1	6.3	-	-	9.4 (1.8 - 10.5)	2.560 (0.460 - 3.420)
50 + 50	3.95	3.95	-	-	7.9 (2.1 - 8.8)	2.780 (0.590 - 3.160)	4.7	4.7	-	-	9.4 (1.9 - 11.2)	2.370 (0.440 - 3.320)
50 + 60	3.42	4.57	-	-	8.0 (2.1 - 8.8)	2.800 (0.570 - 3.120)	4.27	5.13	-	-	9.4 (1.9 - 11.2)	2.370 (0.440 - 3.320)
50 + 71	3.27	4.72	-	-	8.0 (2.1 - 8.8)	2.800 (0.570 - 3.120)	3.88	5.52	-	-	9.4 (1.9 - 11.2)	2.370 (0.440 - 3.320)
60 + 60	4.0	4.0	-	-	8.0 (2.1 - 8.8)	2.690 (0.550 - 3.080)	4.7	4.7	-	-	9.4 (1.9 - 11.2)	2.370 (0.440 - 3.320)
60 + 71	3.84	4.16	-	-	8.0 (2.1 - 8.8)	2.690 (0.550 - 3.080)	4.31	5.09	-	-	9.4 (1.9 - 11.2)	2.370 (0.440 - 3.320)
22 + 22 + 22	2.2	2.2	2.2	-	6.6 (2.9 - 8.1)	1.860 (0.690 - 2.410)	2.9	2.9	2.9	-	8.7 (2.6 - 10.6)	2.150 (0.530 - 3.060)
22 + 22 + 25	2.2	2.2	2.5	-	6.9 (2.9 - 8.3)	1.970 (0.670 - 2.510)	2.84	2.81	3.19	-	8.8 (2.6 - 11.1)	2.170 (0.530 - 3.300)
22 + 22 + 35	2.14	2.14	3.42	-	7.7 (2.9 - 9.0)	2.310 (0.690 - 2.970)	2.62	2.62	4.16	-	9.4 (2.6 - 11.6)	2.310 (0.530 - 3.400)
22 + 22 + 50	1.72	1.72	4.41	-	7.85 (2.9 - 9.0)	2.320 (0.700 - 2.920)	2.2	2.2	5.0	-	9.4 (2.6 - 11.6)	2.120 (0.510 - 3.330)
22 + 22 + 60	1.46	1.46	5.03	-	7.95 (2.9 - 9.0)	2.370 (0.680 - 2.880)	1.99	1.99	5.42	-	9.4 (2.6 - 11.6)	2.120 (0.510 - 3.330)
22 + 22 + 71	1.4	1.4	5.2	-	8.0 (2.9 - 9.0)	2.390 (0.680 - 2.880)	1.8	1.8	5.8	-	9.4 (2.6 - 11.6)	2.120 (0.510 - 3.330)
22 + 25 + 25	2.2	2.5	2.5	-	7.2 (2.9 - 8.9)	2.100 (0.690 - 2.940)	2.72	3.09	3.09	-	8.9 (2.6 - 11.6)	2.170 (0.530 - 3.420)
22 + 25 + 35	2.08	2.36	3.31	-	7.75 (2.9 - 9.0)	2.350 (0.690 - 2.970)	2.52	2.87	4.01	-	9.4 (2.6 - 11.6)	2.270 (0.530 - 3.410)
22 + 25 + 50	1.79	2.04	4.07	-	7.9 (2.9 - 9.0)	2.370 (0.700 - 2.920)	2.13	2.42	4.85	-	9.4 (2.6 - 11.6)	2.100 (0.510 - 3.330)
22 + 25 + 60	1.64	1.87	4.49	-	8.0 (2.9 - 9.0)	2.390 (0.680 - 2.880)	1.93	2.2	5.27	-	9.4 (2.6 - 11.6)	2.100 (0.510 - 3.330)
22 + 25 + 71	1.49	1.69	4.82	-	8.0 (2.9 - 9.0)	2.390 (0.680 - 2.880)	1.75	1.99	5.66	-	9.4 (2.6 - 11.6)	2.100 (0.510 - 3.330)
22 + 35 + 35	1.87	2.99	2.99	-	7.85 (2.9 - 9.0)	2.350 (0.690 - 2.920)	2.25	3.58	3.58	-	9.4 (2.6 - 11.6)	2.210 (0.530 - 3.400)
22 + 35 + 50	1.63	2.58	3.69	-	7.9 (2.9 - 9.0)	2.320 (0.700 - 2.890)	1.93	3.07	4.39	-	9.4 (2.7 - 11.6)	2.050 (0.510 - 3.230)
22 + 35 + 60	1.5	2.4	4.1	-	8.0 (2.9 - 9.0)	2.350 (0.680 - 2.860)	1.77	2.81	4.82	-	9.4 (2.7 - 11.6)	2.050 (0.510 - 3.230)
22 + 35 + 71	1.38	2.18	4.44	-	8.0 (2.9 - 9.0)	2.350 (0.680 - 2.860)	1.62	2.57	5.21	-	9.4 (2.7 - 11.6)	2.050 (0.510 - 3.230)
22 + 50 + 50	1.44	3.28	3.28	-	8.0 (2.9 - 9.0)	2.330 (0.680 - 2.860)	1.7	3.85	3.85	-	9.4 (2.7 - 11.6)	1.960 (0.490 - 3.100)
22 + 50 + 60	1.33	3.03	3.64	-	8.0 (2.9 - 9.0)	2.300 (0.660 - 2.830)	1.57	3.56	4.27	-	9.4 (2.7 - 11.6)	1.960 (0.490 - 3.100)
22 + 50 + 71	1.23	2.8	3.97	-	8.0 (2.9 - 9.0)	2.300 (0.660 - 2.830)	1.45	3.29	4.67	-	9.4 (2.7 - 11.6)	1.960 (0.490 - 3.100)
25 + 25 + 25	2.5	2.5	2.5	-	7.5 (2.9 - 9.0)	2.250 (0.690 - 3.010)	3.0	3.0	3.0	-	9.0 (2.6 - 11.6)	2.170 (0.530 - 3.420)
25 + 25 + 35	2.28	2.28	3.19	-	7.75 (2.9 - 9.0)	2.350 (0.690 - 2.970)	2.76	2.76	3.87	-	9.4 (2.6 - 11.6)	2.250 (0.530 - 3.410)
25 + 25 + 50	1.98	1.98	3.94	-	7.9 (2.9 - 9.0)	2.370 (0.700 - 2.920)	2.35	2.35	4.7	-	9.4 (2.6 - 11.6)	2.090 (0.510 - 3.320)
25 + 25 + 60	1.82	1.82	4.36	-	8.0 (2.9 - 9.0)	2.390 (0.680 - 2.880)	2.14	2.14	5.13	-	9.4 (2.6 - 11.6)	2.090 (0.510 - 3.320)
25 + 25 + 71	1.65	1.65	4.7	-	8.0 (2.9 - 9.0)	2.390 (0.680 - 2.880)	1.94	1.94	5.52	-	9.4 (2.6 - 11.6)	2.090 (0.510 - 3.320)
25 + 35 + 35	2.07	2.89	2.89	-	7.85 (2.9 - 9.0)	2.350 (0.690 - 2.920)	2.48	3.46	3.46	-	9.4 (2.6 - 11.6)	2.190 (0.530 - 3.400)
25 + 35 + 50	1.82	2.54	3.64	-	8.0 (2.9 - 9.0)	2.380 (0.700 - 2.890)	2.14	2.99	4.27	-	9.4 (2.7 - 11.6)	2.030 (0.510 - 3.230)
25 + 35 + 60	1.67	2.33	4.0	-	8.0 (2.9 - 9.0)	2.350 (0.680 - 2.860)	1.96	2.74	4.7	-	9.4 (2.7 - 11.6)	2.030 (0.510 - 3.230)
25 + 35 + 71	1.53	2.14	4.33	-	8.0 (2.9 - 9.0)	2.350 (0.680 - 2.860)	1.79	2.51	5.09	-	9.4 (2.7 - 11.6)	2.030 (0.510 - 3.230)
25 + 50 + 50	1.6	3.2	3.2	-	8.0 (2.9 - 9.0)	2.330 (0.660 - 2.840)	1.88	3.76	3.76	-	9.4 (2.7 - 11.6)	1.940 (0.490 - 3.100)
25 + 50 + 60	1.48	2.96	3.56	-	8.0 (2.9 - 9.0)	2.300 (0.660 - 2.830)	1.74	3.48	4.18	-	9.4 (2.7 - 11.6)	1.940 (0.490 - 3.100)
35 + 35 + 35	2.65	2.65	2.65	-	7.95 (2.9 - 9.0)	2.280 (0.720 - 2.910)	3.13	3.13	3.13	-	9.4 (2.6 - 11.6)	2.170 (0.530 - 3.380)
35 + 35 + 50	2.33	2.33	3.34	-	8.0 (2.9 - 9.0)	2.280 (0.700 - 2.870)	2.74	2.74	3.92	-	9.4 (2.7 - 11.6)	2.010 (0.510 - 3.160)
35 + 35 + 60	2.15	2.15	3.7	-	8.0 (2.9 - 9.0)	2.260 (0.680 - 2.840)	2.53	2.53	4.34	-	9.4 (2.7 - 11.6)	2.010 (0.510 - 3.160)
35 + 35 + 71	1.99	1.99	4.02	-	8.0 (2.9 - 9.0)	2.260 (0.680 - 2.840)	2.33	2.33	4.74	-	9.4 (2.7 - 11.6)	2.010 (0.510 - 3.160)
35 + 50 + 50	2.08	2.96	2.96	-	8.0 (2.9 - 9.0)	2.240 (0.680 - 2.840)	2.44	3.48	3.48	-	9.4 (2.7 - 11.6)	1.920 (0.490 - 3.030)
35 + 50 + 60	1.93	2.76	3.31	-	8.0 (2.9 - 9.0)	2.220 (0.660 - 2.810)	2.27	3.24	3.89	-	9.4 (2.7 - 11.6)	1.920 (0.490 - 3.030)
22 + 22 + 22 + 22	1.95	1.95	1.95	1.95	7.8 (3.7 - 9.2)	2.180 (0.810 - 2.670)	2.35	2.35	2.35	2.35	9.4 (3.4 - 11.6)	2.020 (0.590 - 3.420)
22 + 22 + 22 + 25	1.9	1.9	1.9	2.15	7.85 (3.7 - 9.2)	2.190 (0.810 - 2.670)	2.27	2.27	2.27	2.59	9.4 (3.4 - 11.6)	1.990 (0.590 - 3.410)
22 + 22 + 22 + 35	1.73	1.73	1.73	2.76	7.95 (3.7 - 9.2)	2.210 (0.810 - 2.650)	2.05	2.05	2.05	3.25	9.4 (3.4 - 11.6)	1.960 (0.590 - 3.390)
22 + 22 + 22 + 50	1.52	1.52	1.52	3.44	8.0 (3.7 - 9.2)	2.150 (0.790 - 2.620)	1.78	1.78	1.78	4.06	9.4 (3.5 - 11.6)	1.910 (0.580 - 3.260)
22 + 22 + 22 + 60	1.4	1.4	1.4	3.81	8.0 (3.7 - 9.2)	2.130 (0.770 - 2.590)	1.64	1.64	1.64	4.48	9.4 (3.5 - 11.6)	1.910 (0.580 - 3.260)
22 + 22 + 22 + 71	1.28	1.28	1.28	4.16	8.0 (3.7 - 9.2)	2.130 (0.770 - 2.590)	1.51	1.51	1.51	4.87	9.4 (3.5 - 11.6)	1.910 (0.580 - 3.260)
22 + 22 + 25 + 25	1.87	1.87	2.13	2.13	7.85 (3.7 - 9.2)	2.190 (0.810 - 2.670)	2.2	2.2	2.5	2.5	9.4 (3.4 - 11.6)	1.980 (0.590 - 3.400)
22 + 22 + 25 + 35	1.68	1.68	1.91	1.91	7.95 (3.7 - 9.2)	2.210 (0.810 - 2.650)	1.99	1.99	2.26	3.16	9.4 (3.4 - 11.6)	1.940 (0.590 - 3.390)
22 + 22 + 25 + 50	1.48	1.48	1.68	3.36	8.0 (3.7 - 9.2)	2.150 (0.790 - 2.620)	1.74	1.74	1.97	3.95	9.4 (3.5 - 11.6)	1.890 (0.580 - 3.270)
22 + 22 + 25 + 60	1.36	1.36	1.55	3.73	8.0 (3.7 - 9.2)	2.130 (0.770 - 2.590)	1.6	1.6	1.83	4.37	9.4 (3.5 - 11.6)	1.890 (0.580 - 3.270)
22 + 22 + 25 + 71	1.26	1.26	1.43	4.05	8.0 (3.7 - 9.2)	2.130 (0.770 - 2.590)	1.48	1.48	1.68	4.76	9.4 (3.5 - 11.6)	1.890 (0.580 - 3.270)
22 + 22 + 35 + 35	1.54	1.54	2.46	2.46	8.0 (3.7 - 9.2)	2.210 (0.810 - 2.620)	1.81	1.81	2.89	2.89	9.4 (3.4 - 11.6)	1.910 (0.590 - 3.340)
22 + 22 + 35 + 50	1.36	1.36	2.18	3.1	8.0 (3.7 - 9.2)	2.120 (0.790 - 2.590)	1.6	1.6	2.55	3.65	9.4 (3.5 - 11.6)	1.820 (0.580 - 3.220)
22 + 22 + 35 + 60	1.12	1.12	1.92	3.84	8.0 (3.7 - 9.2)	2.100 (0.770 - 2.560)	1.49	1.49	2.37	4.05	9.4 (3.5 - 11.6)	1.820 (0.580 - 3.220)
22												

MXZ-4A71VA Capacity Output Table

NOTE: Electrical data is for outdoor unit only.
Minimum connection of 2x Indoor Units.

Indoor units combination	Cooling capacity (kW)				Outdoor unit power consumption (kW)	Heating capacity (kW)				Outdoor unit power consumption (kW)		
	Unit A	Unit B	Unit C	Unit D		Total	Unit A	Unit B	Unit C		Unit D	Total
22	2.2	-	-	-	2.2 (1.4 - 3.0)	0.590 (0.420 - 0.740)	3.3	-	-	-	3.3 (1.2 - 4.2)	0.820 (0.380 - 1.090)
25	2.5	-	-	-	2.5 (1.4 - 3.3)	0.660 (0.420 - 0.830)	3.6	-	-	-	3.6 (1.2 - 4.5)	0.910 (0.380 - 1.190)
35	3.5	-	-	-	3.5 (1.5 - 4.3)	0.950 (0.430 - 1.180)	4.0	-	-	-	4.0 (1.2 - 4.8)	1.040 (0.380 - 1.300)
50	5.0	-	-	-	5.0 (1.6 - 5.6)	1.500 (0.480 - 1.660)	7.2	-	-	-	7.2 (1.4 - 8.2)	1.880 (0.370 - 2.300)
60	6.0	-	-	-	6.0 (1.6 - 6.0)	2.110 (0.480 - 2.290)	7.9	-	-	-	7.9 (1.4 - 8.6)	2.150 (0.360 - 2.410)
22 + 22	2.2	2.2	-	-	4.4 (2.0 - 5.4)	1.180 (0.540 - 1.450)	3.3	3.3	-	-	6.6 (1.8 - 7.2)	1.500 (0.410 - 1.710)
22 + 25	2.2	2.5	-	-	4.7 (2.0 - 5.8)	1.300 (0.540 - 1.630)	3.23	3.67	-	-	6.9 (1.8 - 8.7)	1.610 (0.410 - 2.350)
22 + 35	2.2	3.5	-	-	5.7 (2.0 - 6.6)	1.800 (0.540 - 2.100)	2.82	4.48	-	-	7.3 (1.8 - 9.0)	1.770 (0.410 - 2.390)
22 + 50	2.08	4.72	-	-	6.8 (2.0 - 7.1)	2.440 (0.550 - 2.570)	2.63	5.97	-	-	8.6 (1.8 - 9.0)	2.110 (0.390 - 2.220)
22 + 60	1.82	4.98	-	-	6.8 (2.0 - 7.1)	2.460 (0.550 - 2.600)	2.31	6.29	-	-	8.6 (1.8 - 9.0)	2.090 (0.380 - 2.220)
25 + 25	2.5	2.5	-	-	5.0 (2.0 - 6.0)	1.420 (0.540 - 1.750)	3.6	3.6	-	-	7.2 (1.8 - 9.0)	1.710 (0.410 - 2.390)
25 + 35	2.5	3.5	-	-	6.0 (2.0 - 7.1)	2.010 (0.540 - 2.540)	3.17	4.43	-	-	7.6 (1.8 - 9.0)	1.890 (0.410 - 2.390)
25 + 50	2.27	4.53	-	-	6.8 (2.0 - 7.1)	2.440 (0.550 - 2.590)	2.87	5.73	-	-	8.6 (1.8 - 9.0)	2.110 (0.390 - 2.220)
25 + 60	2.0	4.8	-	-	6.8 (2.0 - 7.1)	2.460 (0.550 - 2.600)	2.53	6.07	-	-	8.6 (1.8 - 9.0)	2.090 (0.380 - 2.220)
35 + 35	3.4	3.4	-	-	6.8 (2.0 - 7.1)	2.570 (0.540 - 2.550)	4.3	4.3	-	-	8.6 (1.8 - 9.0)	2.030 (0.410 - 2.390)
35 + 50	2.8	4.0	-	-	6.8 (2.0 - 7.1)	2.440 (0.550 - 2.600)	3.54	5.06	-	-	8.6 (1.8 - 9.0)	2.110 (0.390 - 2.220)
35 + 60	2.51	4.29	-	-	6.8 (2.0 - 7.1)	2.460 (0.550 - 2.610)	3.17	5.43	-	-	8.6 (1.8 - 9.0)	2.090 (0.380 - 2.220)
50 + 50	3.4	3.4	-	-	6.8 (2.1 - 7.1)	2.380 (0.560 - 2.610)	4.3	4.3	-	-	8.6 (1.9 - 9.0)	1.820 (0.360 - 2.040)
50 + 60	3.09	3.71	-	-	6.8 (2.1 - 7.1)	2.400 (0.570 - 2.620)	3.91	4.69	-	-	8.6 (1.9 - 9.0)	1.820 (0.360 - 2.040)
60 + 60	3.4	3.4	-	-	6.8 (2.1 - 7.1)	2.420 (0.580 - 2.630)	4.3	4.3	-	-	8.6 (1.9 - 9.0)	1.820 (0.360 - 2.040)
22 + 22 + 22	2.2	2.2	2.2	-	6.6 (2.9 - 8.1)	1.750 (0.670 - 2.390)	2.87	2.87	2.87	-	8.6 (2.6 - 9.0)	2.020 (0.500 - 2.120)
22 + 22 + 25	2.2	2.2	2.5	-	6.9 (2.9 - 8.3)	1.880 (0.670 - 2.510)	2.74	2.74	3.12	-	8.6 (2.6 - 9.0)	2.020 (0.500 - 2.120)
22 + 22 + 35	1.98	1.98	3.14	-	7.1 (2.9 - 8.5)	1.990 (0.670 - 2.690)	2.39	2.39	3.82	-	8.6 (2.6 - 9.0)	2.020 (0.500 - 2.120)
22 + 22 + 50	1.66	1.66	3.78	-	7.1 (2.9 - 8.5)	1.960 (0.680 - 2.720)	2.01	2.01	4.58	-	8.6 (2.6 - 9.0)	1.860 (0.480 - 1.996)
22 + 22 + 60	1.5	1.5	4.1	-	7.1 (2.9 - 8.5)	1.950 (0.680 - 2.740)	1.82	1.82	4.96	-	8.6 (2.6 - 9.0)	1.850 (0.480 - 1.960)
22 + 25 + 25	2.16	2.47	2.47	-	7.1 (2.9 - 8.5)	1.990 (0.670 - 2.690)	2.62	2.99	2.99	-	8.6 (2.6 - 9.0)	2.020 (0.500 - 2.120)
22 + 25 + 35	1.91	2.16	3.03	-	7.1 (2.9 - 8.5)	1.990 (0.670 - 2.690)	2.31	2.62	3.67	-	8.6 (2.6 - 9.0)	2.020 (0.500 - 2.120)
22 + 25 + 50	1.61	1.83	3.66	-	7.1 (2.9 - 8.5)	1.960 (0.680 - 2.720)	1.95	2.22	4.43	-	8.6 (2.6 - 9.0)	1.860 (0.480 - 1.960)
22 + 25 + 60	1.46	1.66	3.98	-	7.1 (2.9 - 8.5)	1.950 (0.680 - 2.740)	1.77	2.01	4.82	-	8.6 (2.6 - 9.0)	1.850 (0.480 - 1.960)
22 + 35 + 35	1.7	2.7	2.7	-	7.1 (2.9 - 8.5)	1.990 (0.670 - 2.690)	2.06	3.27	3.27	-	8.6 (2.6 - 9.0)	2.020 (0.500 - 2.120)
22 + 35 + 50	1.46	2.32	3.32	-	7.1 (2.9 - 8.5)	1.960 (0.680 - 2.720)	1.77	2.81	4.02	-	8.6 (2.6 - 9.0)	1.860 (0.480 - 1.960)
22 + 35 + 60	1.34	2.12	3.64	-	7.1 (2.9 - 8.5)	1.950 (0.680 - 2.740)	1.62	2.57	4.41	-	8.6 (2.6 - 9.0)	1.850 (0.480 - 1.960)
22 + 50 + 50	1.28	2.91	2.91	-	7.1 (2.9 - 8.5)	1.940 (0.690 - 2.770)	1.56	3.52	3.52	-	8.6 (2.6 - 9.0)	1.670 (0.460 - 1.830)
25 + 25 + 25	2.36	2.36	2.36	-	7.1 (2.9 - 8.5)	1.990 (0.670 - 2.690)	2.86	2.86	2.86	-	8.6 (2.6 - 9.0)	2.020 (0.500 - 2.120)
25 + 25 + 35	2.09	2.09	2.92	-	7.1 (2.9 - 8.5)	1.990 (0.670 - 2.690)	2.53	2.53	3.54	-	8.6 (2.6 - 9.0)	2.020 (0.500 - 2.120)
25 + 25 + 50	1.78	1.78	3.54	-	7.1 (2.9 - 8.5)	1.960 (0.680 - 2.720)	2.15	2.15	4.3	-	8.6 (2.6 - 9.0)	1.860 (0.480 - 1.996)
25 + 25 + 60	1.61	1.61	3.88	-	7.1 (2.9 - 8.5)	1.950 (0.680 - 2.740)	1.95	1.95	4.68	-	8.6 (2.6 - 9.0)	1.850 (0.480 - 1.960)
25 + 35 + 35	1.86	2.62	2.62	-	7.1 (2.9 - 8.5)	1.990 (0.670 - 2.690)	2.26	3.17	3.17	-	8.6 (2.6 - 9.0)	2.020 (0.500 - 2.120)
25 + 35 + 50	1.61	2.26	3.23	-	7.1 (2.9 - 8.5)	1.960 (0.680 - 2.720)	1.95	2.74	3.91	-	8.6 (2.6 - 9.0)	1.860 (0.480 - 1.960)
25 + 35 + 60	1.48	2.07	3.55	-	7.1 (2.9 - 8.5)	1.950 (0.680 - 2.740)	1.79	2.51	4.3	-	8.6 (2.6 - 9.0)	1.850 (0.480 - 1.960)
25 + 50 + 50	1.42	2.84	2.84	-	7.1 (2.9 - 8.5)	1.940 (0.690 - 2.770)	1.72	3.44	3.44	-	8.6 (2.6 - 9.0)	1.670 (0.460 - 1.830)
35 + 35 + 35	2.36	2.36	2.36	-	7.1 (2.9 - 8.5)	1.990 (0.670 - 2.690)	2.86	2.86	2.86	-	8.6 (2.6 - 9.0)	2.020 (0.500 - 2.120)
35 + 35 + 50	2.07	2.07	2.96	-	7.1 (2.9 - 8.5)	1.960 (0.680 - 2.720)	2.51	2.51	3.58	-	8.6 (2.6 - 9.0)	1.860 (0.500 - 1.960)
22 + 22 + 22 + 22	1.77	1.77	1.77	1.77	7.1 (3.7 - 8.8)	1.950 (0.800 - 2.750)	2.15	2.15	2.15	-2.15	8.6 (3.4 - 9.0)	1.930 (0.600 - 1.960)
22 + 22 + 22 + 25	1.72	1.72	1.72	1.94	7.1 (3.7 - 8.8)	1.950 (0.800 - 2.750)	2.08	2.08	2.08	2.36	8.6 (3.4 - 9.0)	1.930 (0.600 - 1.960)
22 + 22 + 22 + 35	1.55	1.55	1.55	2.45	7.1 (3.7 - 8.8)	1.950 (0.800 - 2.750)	1.87	1.87	1.87	2.98	8.6 (3.4 - 9.0)	1.930 (0.600 - 1.960)
22 + 22 + 22 + 50	1.35	1.35	1.35	3.05	7.1 (3.7 - 8.8)	1.910 (0.810 - 2.780)	1.63	1.63	1.63	3.71	8.6 (3.4 - 9.0)	1.770 (0.600 - 1.930)
22 + 22 + 25 + 25	1.66	1.66	1.89	1.89	7.1 (3.7 - 8.8)	1.950 (0.800 - 2.750)	2.01	2.01	2.29	2.29	8.6 (3.4 - 9.0)	1.930 (0.600 - 1.960)
22 + 22 + 25 + 35	1.5	1.5	1.71	2.39	7.1 (3.7 - 8.8)	1.950 (0.800 - 2.750)	1.82	1.82	2.07	2.89	8.6 (3.4 - 9.0)	1.930 (0.600 - 1.960)
22 + 22 + 25 + 50	1.31	1.31	1.5	2.98	7.1 (3.7 - 8.8)	1.910 (0.810 - 2.780)	1.59	1.59	1.81	3.61	8.6 (3.4 - 9.0)	1.770 (0.600 - 1.930)
22 + 22 + 35 + 35	1.37	1.37	2.18	2.18	7.1 (3.7 - 8.8)	1.950 (0.800 - 2.750)	1.66	1.66	2.64	2.64	8.6 (3.4 - 9.0)	1.930 (0.600 - 1.960)
22 + 25 + 25 + 25	1.61	1.83	1.83	1.83	7.1 (3.7 - 8.8)	1.950 (0.800 - 2.750)	1.94	2.22	2.22	2.22	8.6 (3.4 - 9.0)	1.930 (0.600 - 1.960)
22 + 25 + 25 + 35	1.46	1.66	1.66	2.32	7.1 (3.7 - 8.8)	1.950 (0.800 - 2.750)	1.77	2.01	2.01	2.81	8.6 (3.4 - 9.0)	1.930 (0.600 - 1.960)
22 + 25 + 25 + 50	1.29	1.45	1.45	2.91	7.1 (3.7 - 8.8)	1.910 (0.810 - 2.780)	1.56	1.76	1.76	3.52	8.6 (3.4 - 9.0)	1.770 (0.600 - 1.930)
22 + 25 + 35 + 35	1.34	1.52	2.12	2.12	7.1 (3.7 - 8.8)	1.950 (0.800 - 2.750)	1.62	1.84	2.57	2.57	8.6 (3.4 - 9.0)	1.930 (0.600 - 1.960)
25 + 25 + 25 + 25	1.77	1.77	1.77	1.77	7.1 (3.7 - 8.8)	1.950 (0.800 - 2.750)	2.15	2.15	2.15	2.15	8.6 (3.4 - 9.0)	1.930 (0.600 - 1.960)
25 + 25 + 25 + 35	1.61	1.61	1.61	2.27	7.1 (3.7 - 8.8)	1.950 (0.800 - 2.750)	1.95	1.95	1.95	2.75	8.6 (3.4 - 9.0)	1.930 (0.600 - 1.960)
25 + 25 + 25 + 50	1.42	1.42	1.42	2.84	7.1 (3.7 - 8.8)	1.910 (0.810 - 2.780)	1.72	1.72	1.72	3.44	8.6 (3.4 - 9.0)	1.770 (0.600 - 1.930)
25 + 25 + 35 + 35	1.48	1.48	2.07	2.07	7.1 (3.7 - 8.8)	1.950 (0.800 - 2.750)	1.79	1.79	2.51	2.51	8.6 (3.4 - 9.0)	1.930 (0.600 - 1.960)

MXZ-3A54VA Capacity Output Table

NOTE: Electrical data is for outdoor unit only.
Minimum connection of 2x Indoor Units.

Indoor units combination	Cooling capacity (kW)				Outdoor unit power consumption (kW)	Heating capacity (kW)				Outdoor unit power consumption (kW)		
	Unit A	Unit B	Unit C	Total		Unit A	Unit B	Unit C	Total			
22	2.2	-	-	-	2.2 (1.4 - 3.0)	0.590 (0.420 - 0.740)	3.3	-	-	-	3.3 (1.2 - 4.2)	0.820 (0.380 - 1.090)
25	2.5	-	-	-	2.5 (1.4 - 3.3)	0.660 (0.420 - 0.830)	3.6	-	-	-	3.6 (1.2 - 4.5)	0.910 (0.380 - 1.190)
35	3.5	-	-	-	3.5 (1.5 - 4.3)	0.950 (0.430 - 1.180)	4.0	-	-	-	4.0 (1.2 - 4.8)	1.040 (0.380 - 1.300)
50	5.0	-	-	-	5.0 (1.6 - 5.6)	1.500 (0.480 - 1.660)	6.8	-	-	-	6.8 (1.4 - 8.2)	1.770 (0.370 - 2.300)
22 + 22	2.2	2.2	-	-	4.4 (2.0 - 5.4)	1.180 (0.540 - 1.450)	3.3	3.3	-	-	6.6 (1.8 - 7.2)	1.500 (0.410 - 1.710)
22 + 25	2.2	2.5	-	-	4.7 (2.0 - 5.8)	1.300 (0.540 - 1.630)	3.18	3.62	-	-	6.8 (1.8 - 8.7)	1.580 (0.410 - 2.350)
22 + 35	2.08	3.32	-	-	5.4 (2.0 - 6.8)	1.600 (0.540 - 2.550)	2.62	4.18	-	-	6.8 (1.8 - 9.0)	1.580 (0.410 - 2.390)
22 + 50	1.65	3.75	-	-	5.4 (2.0 - 6.8)	1.580 (0.550 - 2.440)	2.08	4.72	-	-	6.8 (1.8 - 9.0)	1.440 (0.390 - 2.220)
25 + 25	2.5	2.5	-	-	5.0 (2.0 - 6.0)	1.420 (0.540 - 1.750)	3.4	3.4	-	-	6.8 (1.8 - 9.0)	1.580 (0.410 - 2.390)
25 + 35	2.25	3.15	-	-	5.4 (2.0 - 6.8)	1.600 (0.540 - 2.550)	2.83	3.97	-	-	6.8 (1.8 - 9.0)	1.580 (0.410 - 2.390)
25 + 50	1.8	3.6	-	-	5.4 (2.0 - 6.8)	1.580 (0.550 - 2.440)	2.27	4.53	-	-	6.8 (1.8 - 9.0)	1.440 (0.390 - 2.220)
35 + 35	2.7	2.7	-	-	5.4 (2.0 - 6.8)	1.600 (0.540 - 2.550)	3.4	3.4	-	-	6.8 (1.8 - 9.0)	1.580 (0.410 - 2.390)
35 + 50	2.22	3.18	-	-	5.4 (2.0 - 6.8)	1.530 (0.550 - 2.440)	2.8	4.0	-	-	6.8 (1.8 - 9.0)	1.440 (0.410 - 2.220)
50 + 50	2.7	2.7	-	-	5.4 (2.1 - 6.8)	1.550 (0.560 - 2.340)	3.4	3.4	-	-	6.8 (1.9 - 9.0)	1.390 (0.360 - 2.040)
22 + 22 + 22	1.8	1.8	1.8	-	5.4 (2.9 - 6.8)	1.295 (0.670 - 1.770)	2.27	2.27	2.27	-	6.8 (2.6 - 9.0)	1.455 (0.500 - 2.120)
22 + 22 + 25	1.72											

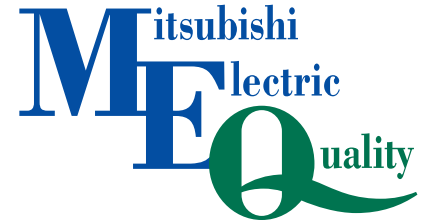
MXZ-2A52VA Capacity Output Table

NOTE: Electrical data is for outdoor unit only.
Minimum connection of 2x Indoor Units.

Indoor units combination	Cooling capacity (kW)			Outdoor unit power consumption (kW)	Heating capacity (kW)			Outdoor unit power consumption (kW)
	Unit A	Unit B	Total		Unit A	Unit B	Total	
22	2.20		2.2 (0.9 - 3.0)	0.430 (0.120 - 0.620)	3.30		3.3 (0.9 - 4.0)	0.670 (0.110 - 0.910)
25	2.50		2.5 (0.9 - 3.3)	0.490 (0.120 - 0.690)	3.60		3.6 (0.9 - 4.5)	0.730 (0.110 - 1.050)
35	3.50		3.5 (0.9 - 4.0)	0.730 (0.120 - 0.900)	4.00		4.0 (0.9 - 4.8)	0.870 (0.110 - 1.150)
22 + 22	2.20	2.20	4.4 (1.1 - 5.3)	1.130 (0.250 - 1.510)	3.05	3.05	6.1 (1.0 - 6.7)	1.550 (0.200 - 1.730)
22 + 25	2.20	2.50	4.7 (1.1 - 5.4)	1.250 (0.250 - 1.560)	2.90	3.30	6.2 (1.0 - 6.8)	1.600 (0.200 - 1.750)
22 + 35	1.93	3.07	5.0 (1.1 - 5.6)	1.400 (0.250 - 1.650)	2.43	3.87	6.3 (1.0 - 7.0)	1.650 (0.200 - 1.790)
25 + 25	2.50	2.50	5.0 (1.1 - 5.6)	1.400 (0.250 - 1.650)	3.15	3.15	6.3 (1.0 - 7.0)	1.650 (0.200 - 1.790)
25 + 35	2.13	2.97	5.1 (1.1 - 5.8)	1.450 (0.250 - 1.740)	2.63	3.67	6.3 (1.0 - 7.1)	1.650 (0.200 - 1.820)
35 + 35	2.60	2.60	5.2 (1.1 - 6.0)	1.505 (0.250 - 1.830)	3.20	3.20	6.4 (1.0 - 7.2)	1.705 (0.200 - 1.840)

Your Guarantee of Excellence

This emblem is your assurance of the very best in technology and quality as it represents Mitsubishi Electric's continuing efforts in making our air conditioners the industry standard. Every Mitsubishi Electric air conditioner is a product of painstaking research, relentless testing, and a resolute determination to improve upon vital performance characteristics. As a result, our air conditioners have become more durable, less costly to operate, quieter, easy on installation and maintenance, and better able to distribute air evenly throughout any type of interior. This kind of commitment to quality enables our products to create remarkably pleasant environments that will ultimately make your life more comfortable.



5 Year Warranty

Mitsubishi Electric Air Conditioners / Heat Pumps come with a full 5 year parts, labour and compressor warranty. Warranty conditions apply. Please be aware of these conditions prior to purchasing this product.

The best quality you can rely on

Our quality assurance program guided by our stringent Quality Policy ensures confidence in all phases of the development process from design and manufacture, to the finished product.

Buyer beware

The brand Mitsubishi Electric is not to be confused with the brand Mitsubishi Heavy Industries. Both brands may share the 3 red diamonds but are manufactured in completely different factories to completely different specifications.



All units line tested



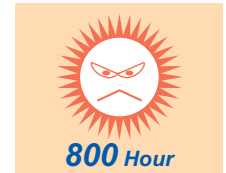
Sound test



Performance test



Endurance test



Heat stress test



Certificate Number
49385



Certificate Number
EC97J1227

Mitsubishi Electric Shizuoka Works acquired ISO 9001 certification under Series 9000 of the International Standard Organisation (ISO) based on a review of quality warranties for the production of air conditioning equipment. The plant also acquired environmental management system standard ISO 14001 certification.

For further information contact:



Black Diamond Technologies Ltd



AUCKLAND

Unit 1, 4 Walls Road
 PO Box 12-726, Penrose
 Phone (09) 526 9347, Fax (09) 526 9369

WELLINGTON (HEAD OFFICE)

1 Parliament Street
 PO Box 30-772, Lower Hutt
 Phone (04) 560 9147, Fax (04) 560 9133

CHRISTCHURCH

Suite 2, Level 1, 37 Mandeville Street
 PO Box 1604, Christchurch
 Phone (03) 341 2837, Fax (03) 341 2838

www.mitsubishi-electric.co.nz / 0800 QUIET AIRCON

New publication effective March 2009. All features and specifications are subject to change and amendment at anytime. Where specifications are critical to design or pre-build we advise that you seek confirmation of accuracy from our product management team on (04) 560 9100.